

## Recombinant Human SUMO3/SMT3A Protein

**Catalog Number:** PKSH033068

**Note:** Centrifuge before opening to ensure complete recovery of vial contents.

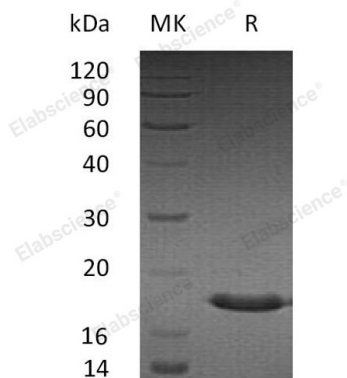
### Description

<b>Species</b>	Human
<b>Source</b>	E.coli-derived Human SUMO3;SMT3A protein Met 1-Phe103
<b>Calculated MW</b>	11.6 kDa
<b>Observed MW</b>	18 kDa
<b>Accession</b>	P55854
<b>Bio-activity</b>	Not validated for activity

### Properties

<b>Purity</b>	> 95 % as determined by reducing SDS-PAGE.
<b>Endotoxin</b>	< 1.0 EU per µg of the protein as determined by the LAL method.
<b>Storage</b>	Generally, lyophilized proteins are stable for up to 12 months when stored at -20 to -80 °C. Reconstituted protein solution can be stored at 4-8°C for 2-7 days. Aliquots of reconstituted samples are stable at < -20°C for 3 months.
<b>Shipping</b>	This product is provided as lyophilized powder which is shipped with ice packs.
<b>Formulation</b>	Lyophilized from a 0.2 µm filtered solution of PBS, pH 7.4. Normally 5% - 8% trehalose, mannitol and 0.01% Tween 80 are added as protectants before lyophilization.
<b>Reconstitution</b>	Please refer to the specific buffer information in the printed manual. Please refer to the printed manual for detailed information.

### Data



> 95 % as determined by reducing SDS-PAGE.

### Background

SUMO3 belongs to the SUMO protein family and operates like ubiquitin. Ubiquitin-like protein which can be covalently attached to target lysines either as a monomer or as a lysine-linked polymer. Nevertheless unlike ubiquitin that targets proteins for degradation; SUMO3 takes part in several cellular processes; such as nuclear transport; transcription regulation; apoptosis and protein stability. SUMO3 participates in amyloid beta generation and has a key role in the onset or progression of Alzheimer's disease.

### For Research Use Only