

## Recombinant Mouse VCAM1 Protein (Fc Tag)

**Catalog Number:** PKSM041260

**Note:** Centrifuge before opening to ensure complete recovery of vial contents.

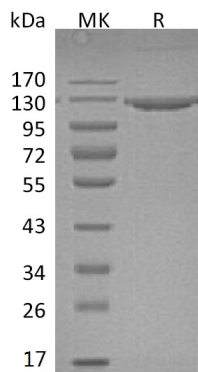
### Description

<b>Species</b>	Mouse
<b>Source</b>	HEK293 Cells-derived Mouse VCAM1 protein Phe25-Glu698, with an C-terminal Fc
<b>Calculated MW</b>	101.4 kDa
<b>Observed MW</b>	100-130 kDa
<b>Accession</b>	P29533
<b>Bio-activity</b>	Not validated for activity

### Properties

<b>Purity</b>	> 95 % as determined by reducing SDS-PAGE.
<b>Endotoxin</b>	< 1.0 EU per µg of the protein as determined by the LAL method.
<b>Storage</b>	Generally, lyophilized proteins are stable for up to 12 months when stored at -20 to -80 °C. Reconstituted protein solution can be stored at 4-8°C for 2-7 days. Aliquots of reconstituted samples are stable at < -20°C for 3 months.
<b>Shipping</b>	This product is provided as lyophilized powder which is shipped with ice packs.
<b>Formulation</b>	Lyophilized from a 0.2 µm filtered solution of PBS, pH 7.4. Normally 5% - 8% trehalose, mannitol and 0.01% Tween 80 are added as protectants before lyophilization.
<b>Reconstitution</b>	Please refer to the specific buffer information in the printed manual. Please refer to the printed manual for detailed information.

### Data



### Background

Vascular cell adhesion molecule 1 (VCAM-1) is a cell surface protein belonging to the immunoglobulin superfamily, the protein is expressed by activated endothelial cells and certain leukocytes (such as macrophages). IL-1 beta, IL-4, TNF-alpha and IFN-gamma induced the expression of VCAM-1. The human and mouse VCAM-1 proteins share approximately 76% amino acid similarity. Mouse VCAM-1 is important in cell-cell recognition. It appears to function in leukocyte-endothelial cell adhesion, and interacts with integrin alpha-4/beta-1 (ITGA4/ITGB1) on leukocytes, and mediates both adhesion and signal transduction.

### For Research Use Only