

RCC2 Polyclonal Antibody

catalog number: **E-AB-64457**

Note: Centrifuge before opening to ensure complete recovery of vial contents.

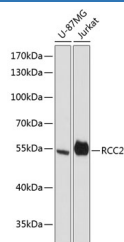
Description

Reactivity	Human
Immunogen	Recombinant fusion protein of human RCC2 (NP_001129676.1).
Host	Rabbit
Isotype	IgG
Purification	Affinity purification
Buffer	Phosphate buffered solution, pH 7.4, containing 0.05% stabilizer and 50% glycerol.

Applications Recommended Dilution

WB	1:500-1:2000
-----------	--------------

Data



Western blot analysis of extracts of various cell lines using
RCC2 Polyclonal Antibody at dilution of 1:3000.

Observed-MW:55 kDa

Calculated-MW:56 kDa

Preparation & Storage

Storage	Store at -20°C Valid for 12 months. Avoid freeze / thaw cycles.
Shipping	The product is shipped with ice pack, upon receipt, store it immediately at the temperature recommended.

Background

The protein encoded by this gene is a guanine exchange factor that is active on RalA, a small GTPase. The encoded protein and RalA are both essential for proper kinetochore-microtubule function in early mitosis. This protein has been shown to be a biomarker for colorectal cancer.

For Research Use Only