

CLDN19 Polyclonal Antibody

catalog number: E-AB-92497

Note: Centrifuge before opening to ensure complete recovery of vial contents.

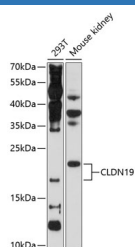
Description

Reactivity	Human;Mouse
Immunogen	Recombinant fusion protein of human CLDN19
Host	Rabbit
Isotype	IgG
Purification	Affinity purification
Buffer	Phosphate buffered solution, pH 7.4, containing 0.05% stabilizer and 50% glycerol.

Applications

WB	1:500-1:2000
-----------	--------------

Data



Western blot analysis of extracts of various cell lines using CLDN19 Polyclonal Antibody at 1:1000 dilution.

Observed-MV:23 kDa

Calculated-MV:22 kDa/23 kDa

Preparation & Storage

Storage	Store at -20°C Valid for 12 months. Avoid freeze / thaw cycles.
Shipping	The product is shipped with ice pack, upon receipt, store it immediately at the temperature recommended.

Background

The product of this gene belongs to the claudin family. It plays a major role in tight junction-specific obliteration of the intercellular space, through calcium-independent cell-adhesion activity. Defects in this gene are the cause of hypomagnesemia renal with ocular involvement (HOMGO). HOMGO is a progressive renal disease characterized by primary renal magnesium wasting with hypomagnesemia, hypercalciuria and nephrocalcinosis associated with severe ocular abnormalities such as bilateral chorioretinal scars, macular colobomata, significant myopia and nystagmus. Alternatively spliced transcript variants encoding distinct isoforms have been identified for this gene.

For Research Use Only