

## KHSRP Polyclonal Antibody

catalog number: E-AB-18183

**Note:** Centrifuge before opening to ensure complete recovery of vial contents.

### Description

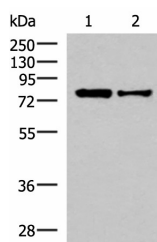
<b>Reactivity</b>	Human;Mouse;Rat
<b>Immunogen</b>	Synthetic peptide of human KHSRP
<b>Host</b>	Rabbit
<b>Isotype</b>	IgG
<b>Purification</b>	Antigen affinity purification
<b>Conjugation</b>	Unconjugated
<b>Buffer</b>	Phosphate buffered solution, pH 7.4, containing 0.05% stabilizer and 50% glycerol.

### Applications

### Recommended Dilution

<b>WB</b>	1:1000-1:5000
<b>IHC</b>	1:50-1:300

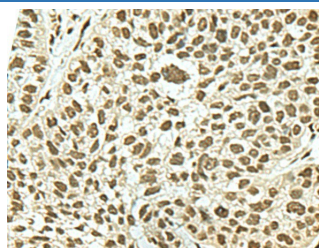
### Data



Western blot analysis of HepG2 and Hela cell lysates using KHSRP Polyclonal Antibody at dilution of 1:1000

**Observed-MV:Refer to figures**

**Calculated-MV:73 kDa**



Immunohistochemistry of paraffin-embedded Human esophagus cancer tissue using KHSRP Polyclonal Antibody at dilution of 1:50(×200)

### Preparation & Storage

<b>Storage</b>	Store at -20°C Valid for 12 months. Avoid freeze / thaw cycles.
<b>Shipping</b>	The product is shipped with ice pack, upon receipt, store it immediately at the temperature recommended.

### Background

The KHSRP gene encodes a multifunctional RNA-binding protein implicated in a variety of cellular processes, including transcription, alternative pre-mRNA splicing, and mRNA localization. KHSRP (KH-Type Splicing Regulatory Protein) is a Protein Coding gene. Diseases associated with KHSRP include Ataxia, Cerebellar, Cayman Type. Among its related pathways are CDK-mediated phosphorylation and removal of Cdc6 and Gene Expression. GO annotations related to this gene include nucleic acid binding and RNA binding. An important paralog of this gene is FUBP1.