

Recombinant SLAMF8 Monoclonal Antibody

catalog number: **AN300540P**

Note: Centrifuge before opening to ensure complete recovery of vial contents.

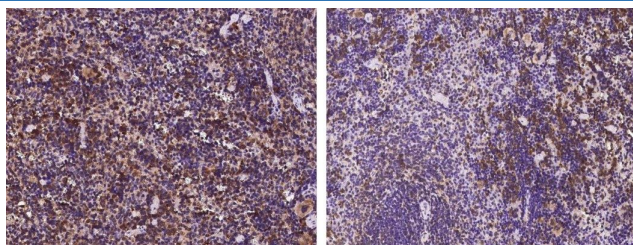
Description

Reactivity	Mouse
Immunogen	Recombinant Mouse SLAMF8 Protein
Host	Rabbit
Isotype	IgG
Clone	3F8
Purification	Protein A
Buffer	0.2 µm filtered solution in PBS

Applications Recommended Dilution

IHC-P	1:100-1:500
--------------	-------------

Data



Immunohistochemistry of paraffin-embedded mouse spleen (from 2 donors) using SLAMF8 Monoclonal Antibody at dilution of 1:200.

Preparation & Storage

Storage	This antibody can be stored at 2°C-8°C for one month without detectable loss of activity. Antibody products are stable for twelve months from date of receipt when stored at -20°C to -80°C. Preservative-Free. Avoid repeated freeze-thaw cycles.
Shipping	Ice bag

Background

The signaling lymphocyte activation molecule (SLAM) family includes homophilic and heterophilic receptors that modulate both adaptive and innate immune responses. These receptors share a common ectodomain organization: a membrane-proximal immunoglobulin constant domain and a membrane-distal immunoglobulin variable domain that is responsible for ligand recognition. SLAM family of receptors is expressed by a wide range of immune cells. Through their cytoplasmic domain, SLAM family receptors associate with SLAM-associated protein (SAP)-related molecules, a group of cytoplasmic adaptors composed almost exclusively of an SRC homology 2 domain. SLAM family receptors, in association with SAP family adaptors, have crucial roles during normal immune reactions in innate and adaptive immune cells. Mouse SLAM family member 8, also known as B-lymphocyte activator macrophage expressed, BCM-like membrane protein, SLAMF8 and BLAME, is a single-pass type I membrane protein. It contains one Ig-like C2-type (immunoglobulin-like) domain. SLAMF8/BLAME is expressed in lymph node, spleen, thymus and bone marrow. It may play a role in B-lineage commitment and/or modulation of signaling through the B-cell receptor.

For Research Use Only