

## NPM1 Polyclonal Antibody

catalog number: **E-AB-40477**

**Note:** Centrifuge before opening to ensure complete recovery of vial contents.

### Description

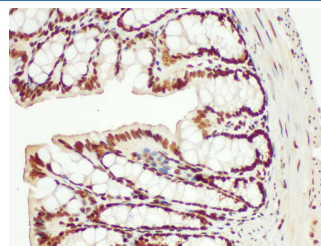
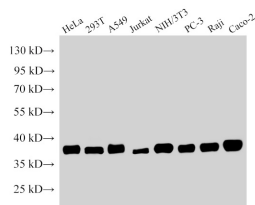
<b>Reactivity</b>	Human;Mouse;Rat
<b>Immunogen</b>	Recombinant Mouse Nucleophosmin protein
<b>Host</b>	Rabbit
<b>Isotype</b>	IgG
<b>Purification</b>	Antigen Affinity Purification
<b>Buffer</b>	PBS with 0.05% Proclin300, 1% protective protein and 50% glycerol, pH7.4

### Applications

### Recommended Dilution

<b>WB</b>	1:10000-1:20000
<b>IHC</b>	1:200-1:500

### Data

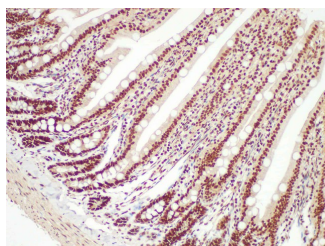


Western Blot analysis of 1)Hela, 2)293T, 3)A549, 4)Jurkat, 5)NIH/3T3, 6)PC-3, 7)Raji, 8)Caco-2 using NPM1 Polyclonal Antibody at dilution of 1:15000

Immunohistochemistry of paraffin-embedded Mouse colon using NPM1 Polyclonal Antibody at dilution of 1:200.

**Observed-MW:37 kDa**

**Calculated-MW:32 kDa**



Immunohistochemistry of paraffin-embedded Rat colon using NPM1 Polyclonal Antibody at dilution of 1:200.

### Preparation & Storage

<b>Storage</b>	Store at -20°C Valid for 12 months. Avoid freeze / thaw cycles.
<b>Shipping</b>	The product is shipped with ice pack, upon receipt, store it immediately at the temperature recommended.

### Background

### For Research Use Only

Toll-free: 1-888-852-8623  
Web: [www.elabscience.com](http://www.elabscience.com)

Tel: 1-832-243-6086  
Email: [techsupport@elabscience.com](mailto:techsupport@elabscience.com)

Fax: 1-832-243-6017

Rev. V2.1

Nucleophosmin (NPM1,B23) is a putative ribosome assembly factor with a high affinity for peptides containing nuclear localization signals (NLSs). The transport of proteins across the nuclear envelope is a selective,multistep process involving several cytoplasmic factors. Proteins must be recognized as import substrates,dock at the nuclear pore complex and translocate across the nuclear envelope in an ATP-dependent fashion. Several cytosolic and nuclear proteins that are central to this process have been identified. The 38 kDa nuclear protein nucleophosmin is involved in ribosomal assembly and rRNA transport. It is an abundant protein that is highly phosphorylated by Cdc2 kinase during mitosis.