

Purified Anti-Human CD19 Antibody[CB19]

catalog number: E-AB-F10040P

Note: Centrifuge before opening to ensure complete recovery of vial contents.

Description

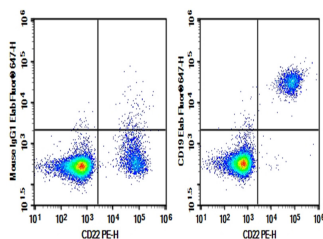
| | |
|---------------------|---|
| Reactivity | Human |
| Immunogen | Recombinant Human CD19 protein |
| Host | Mouse |
| Isotype | Mouse IgG1, κ |
| Clone | CB19 |
| Purification | >98%, Protein A/G purified |
| Conjugation | Unconjugated |
| Buffer | Phosphate-buffered solution, pH 7.2, containing 0.05% non-protein stabilizer. Dialyze to completely remove the stabilizer prior to labeling. |

Applications

Recommended Dilution

| | |
|------------|--|
| FCM | 2 μ g/mL(0.5×10^6 - 1×10^6 cells) |
|------------|--|

Data



Human peripheral blood lymphocytes were stained with 0.2 μ g Purified Anti-Human CD19 Antibody[CB19] (Right) and 0.2 μ g Mouse IgG1, κ Isotype Control (Left), followed by

Elab Fluor® 647-conjugated Goat Anti-Mouse IgG Secondary Antibody, then anti-Human CD22 PE-conjugated Monoclonal Antibody.

Preparation & Storage

| | |
|-----------------|--|
| Storage | Store at 4°C valid for 12 months or -20°C valid for long term storage, avoid freeze / thaw cycles. |
| Shipping | Ice bag |

Background

CD19 protein is a 95 kDa transmembrane glycoprotein that plays a central role in B cell activation and humoral immune responses. CD19 is expressed throughout B cell development from pre-B cells through mature B cells, and it is commonly used as a B cell lineage marker. It is required for the responsiveness of mature B cell to antigen stimulation, germinal center development, and antibody affinity maturation. The CD19 protein associates with the B cell antigen receptor (BCR), CD81, CD38, CD21, CD22, and IFITM1/CD225/Leu13. These associations enable CD19 to amplify B cell signaling and reduce the threshold for antigen stimulation through the BCR.