

LLGL1 Polyclonal Antibody

catalog number: E-AB-92197

Note: Centrifuge before opening to ensure complete recovery of vial contents.

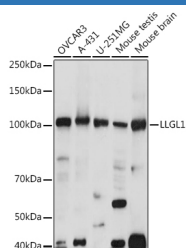
Description

Reactivity	Human;Mouse;Rat
Immunogen	Recombinant fusion protein of human LLGL1
Host	Rabbit
Isotype	IgG
Purification	Affinity purification
Buffer	Phosphate buffered solution, pH 7.4, containing 0.05% stabilizer and 50% glycerol.

Applications

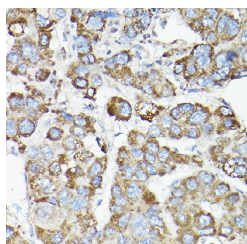
Applications	Recommended Dilution
WB	1:500-1:2000
IHC	1:50-1:200
IF	1:50-1:200

Data

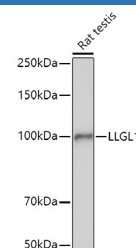
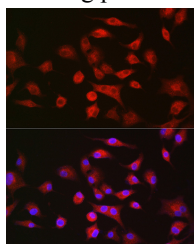


Western blot analysis of extracts of various cell lines using LLGL1 Polyclonal Antibody at 1:1000 dilution.

Observed-MW:115 kDa
Calculated-MW:112 kDa

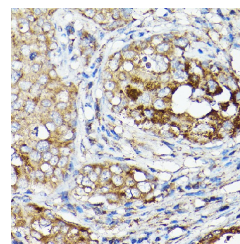


Immunohistochemistry of paraffin-embedded human liver cancer using LLGL1 Polyclonal Antibody at dilution of 1:50 (40x lens). Perform high pressure antigen retrieval with 10 mM citrate buffer pH 6.0 before commencing with IHC staining protocol.

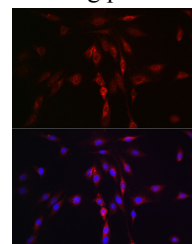


Western blot analysis of extracts of Rat testis using LLGL1 Polyclonal Antibody at 1:1000 dilution.

Observed-MW:115 kDa
Calculated-MW:112 kDa



Immunohistochemistry of paraffin-embedded human breast cancer using LLGL1 Polyclonal Antibody at dilution of 1:50 (40x lens). Perform high pressure antigen retrieval with 10 mM citrate buffer pH 6.0 before commencing with IHC staining protocol.



For Research Use Only

Immunofluorescence analysis of A-549 cells using LLGL1 Polyclonal Antibody at dilution of 1:100. Blue: DAPI for nuclear staining.

Immunofluorescence analysis of C6 cells using LLGL1 Polyclonal Antibody at dilution of 1:100. Blue: DAPI for nuclear staining.

Preparation & Storage

Storage

Store at -20°C Valid for 12 months. Avoid freeze / thaw cycles.

Shipping

The product is shipped with ice pack, upon receipt, store it immediately at the temperature recommended.

Background

This gene encodes a protein that is similar to a tumor suppressor in *Drosophila*. The protein is part of a cytoskeletal network and is associated with nonmuscle myosin II heavy chain and a kinase that specifically phosphorylates this protein at serine residues. The gene is located within the Smith-Magenis syndrome region on chromosome 17.

For Research Use Only