

## Recombinant Mouse IL-2RG/CD132 Protein (His Tag)

**Catalog Number:** PKSM041317

**Note:** Centrifuge before opening to ensure complete recovery of vial contents.

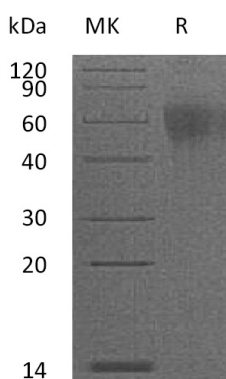
### Description

<b>Species</b>	Mouse
<b>Source</b>	HEK293 Cells-derived Mouse IL-2RG/CD132 protein Ser25-Ala263, with an C-terminal His
<b>Calculated MW</b>	29 kDa
<b>Observed MW</b>	45-75 kDa
<b>Accession</b>	Q3UPA9
<b>Bio-activity</b>	Not validated for activity

### Properties

<b>Purity</b>	> 95 % as determined by reducing SDS-PAGE.
<b>Endotoxin</b>	< 1.0 EU per µg of the protein as determined by the LAL method.
<b>Storage</b>	Generally, lyophilized proteins are stable for up to 12 months when stored at -20 to -80 °C. Reconstituted protein solution can be stored at 4-8°C for 2-7 days. Aliquots of reconstituted samples are stable at < -20°C for 3 months.
<b>Shipping</b>	This product is provided as lyophilized powder which is shipped with ice packs.
<b>Formulation</b>	Lyophilized from a 0.2 µm filtered solution of 20mM Tris-HCl, 150mM NaCl, pH 8.5. Normally 5% - 8% trehalose, mannitol and 0.01% Tween 80 are added as protectants before lyophilization.
	Please refer to the specific buffer information in the printed manual.
<b>Reconstitution</b>	Please refer to the printed manual for detailed information.

### Data



### Background

The Interleukin-2 receptor gamma chain (IL-2 R $\gamma$ , CD132) of the high affinity functional mouse IL-2 receptor complex is a member the hematopoietin receptor family. It is expressed on most lymphocyte (white blood cell) populations, and its gene is found on the X-chromosome of mammals. Common IL2 receptor- $\gamma$  Chain is required for IL-2 receptor signaling. Besides IL-2, the Common IL2 receptor- $\gamma$  chain has been shown to be a component of the functional receptor complexes for IL-4, IL-7, IL-9 and IL-15. It is a component of multiple cytokine receptors that are essential for lymphocyte development and function. Common IL2 receptor- $\gamma$  Chain is also designated the common gamma chain.

### For Research Use Only