

IRGM Polyclonal Antibody

catalog number: E-AB-11336

Note: Centrifuge before opening to ensure complete recovery of vial contents.

Description

| | |
|--------------|--|
| Reactivity | Human |
| Immunogen | Recombinant protein of human IRGM |
| Host | Rabbit |
| Isotype | IgG |
| Purification | Affinity purification |
| Conjugation | Unconjugated |
| Buffer | Phosphate buffered solution, pH 7.4, containing 0.05% stabilizer and 50% glycerol. |

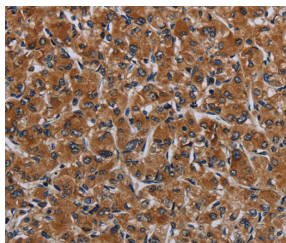
Applications

Recommended Dilution

IHC

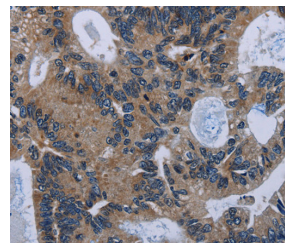
1:50-1:200

Data



Immunohistochemistry of paraffin-embedded Human prostate cancer tissue using IRGM Polyclonal Antibody at dilution

1:50



Immunohistochemistry of paraffin-embedded Human colon cancer tissue using IRGM Polyclonal Antibody at dilution

1:50

Preparation & Storage

Storage

Store at -20°C Valid for 12 months. Avoid freeze / thaw cycles.

Shipping

The product is shipped with ice pack, upon receipt, store it immediately at the temperature recommended.

Background

This gene encodes a member of the p47 immunity-related GTPase family. The encoded protein may play a role in the innate immune response by regulating autophagy formation in response to intracellular pathogens. Polymorphisms that affect the normal expression of this gene are associated with a susceptibility to Crohn's disease and tuberculosis.