

GPT2 Polyclonal Antibody

catalog number: E-AB-19961

Note: Centrifuge before opening to ensure complete recovery of vial contents.

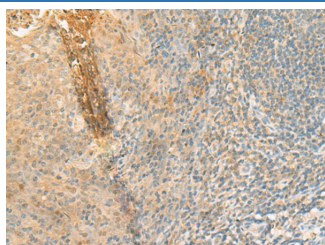
Description

Reactivity	Human;Mouse
Immunogen	Synthetic peptide of human GPT2
Host	Rabbit
Isotype	IgG
Purification	Antigen affinity purification
Conjugation	Unconjugated
buffer	Phosphate buffered solution, pH 7.4, containing 0.05% stabilizer and 50% glycerol.

Applications

Applications	Recommended Dilution
IHC	1:25-1:100

Data



Immunohistochemistry of paraffin-embedded Human tonsil tissue using GPT2 Polyclonal Antibody at dilution of 1:70(×200)

Preparation & Storage

Storage	Store at -20°C Valid for 12 months. Avoid freeze / thaw cycles.
Shipping	The product is shipped with ice pack, upon receipt, store it immediately at the temperature recommended.

Background

This gene encodes a mitochondrial alanine transaminase, a pyridoxal enzyme that catalyzes the reversible transamination between alanine and 2-oxoglutarate to generate pyruvate and glutamate. Alanine transaminases play roles in gluconeogenesis and amino acid metabolism in many tissues including skeletal muscle, kidney, and liver. Activating transcription factor 4 upregulates this gene under metabolic stress conditions in hepatocyte cell lines. A loss of function mutation in this gene has been associated with developmental encephalopathy. Alternative splicing results in multiple transcript variants.

For Research Use Only