

HPCAL1 Polyclonal Antibody

catalog number: E-AB-92369

Note: Centrifuge before opening to ensure complete recovery of vial contents.

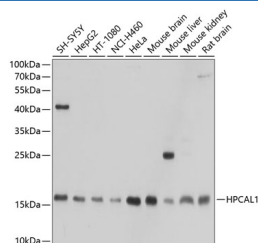
Description

Reactivity	Human;Mouse;Rat
Immunogen	Recombinant fusion protein of human HPCAL1
Host	Rabbit
Isotype	IgG
Purification	Affinity purification
Buffer	Phosphate buffered solution, pH 7.4, containing 0.05% stabilizer and 50% glycerol.

Applications

WB	1:500-1:2000
IP	50-1:200

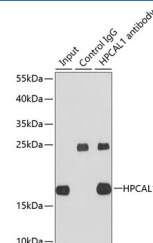
Data



Western blot analysis of extracts of various cell lines using HPCAL1 Polyclonal Antibody at 1:1000 dilution.

Observed-MW:Refer to figures

Calculated-MW:22 kDa



Immunoprecipitation analysis of extracts of HepG2 cells using HPCAL1 Polyclonal Antibody. Western blot was performed from the immunoprecipitate using HPCAL1 Polyclonal Antibody at a dilution of 1:1000.

Observed-MW:Refer to figures

Calculated-MW:22 kDa

Preparation & Storage

Storage	Store at -20°C Valid for 12 months. Avoid freeze / thaw cycles.
Shipping	The product is shipped with ice pack, upon receipt, store it immediately at the temperature recommended.

Background

The protein encoded by this gene is a member of neuron-specific calcium-binding proteins family found in the retina and brain. It is highly similar to human hippocalcin protein and nearly identical to the rat and mouse hippocalcin like-1 proteins. It may be involved in the calcium-dependent regulation of rhodopsin phosphorylation and may be of relevance for neuronal signalling in the central nervous system. Several alternatively spliced transcript variants encoding the same protein have been found for this gene.

For Research Use Only