

# UCN3 Polyclonal Antibody

catalog number: E-AB-17833

**Note:** Centrifuge before opening to ensure complete recovery of vial contents.

## Description

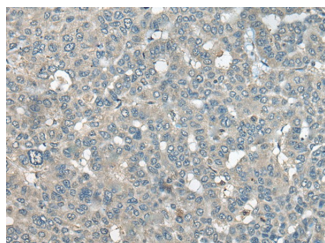
<b>Reactivity</b>	Human
<b>Immunogen</b>	Synthetic peptide of human UCN3
<b>Host</b>	Rabbit
<b>Isotype</b>	IgG
<b>Purification</b>	Antigen affinity purification
<b>Conjugation</b>	Unconjugated
<b>buffer</b>	Phosphate buffered solution, pH 7.4, containing 0.05% stabilizer and 50% glycerol.

## Applications

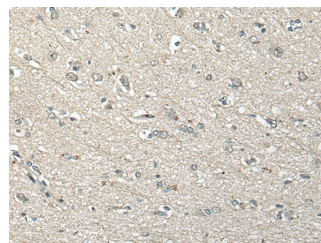
## Recommended Dilution

<b>IHC</b>	1:50-1:300
------------	------------

## Data



Immunohistochemistry of paraffin-embedded Human liver cancer tissue using UCN3 Polyclonal Antibody at dilution of 1:55(×200)



Immunohistochemistry of paraffin-embedded Human brain tissue using UCN3 Polyclonal Antibody at dilution of 1:55(×200)

## Preparation & Storage

<b>Storage</b>	Store at -20°C Valid for 12 months. Avoid freeze / thaw cycles.
<b>Shipping</b>	The product is shipped with ice pack, upon receipt, store it immediately at the temperature recommended.

## Background

This gene encodes a member of the sauvagine/corticotropin-releasing factor/urotensin I family of proteins. The encoded preproprotein is proteolytically processed to generate the mature peptide hormone, which is secreted by pancreatic beta and alpha cells. This hormone is an endogenous ligand for corticotropin-releasing factor receptor 2 and may regulate insulin secretion in response to plasma glucose levels. Patients with type 2 diabetes exhibit reduced levels of the encoded protein in beta cells. In the brain, the encoded protein may be responsible for the effects of stress on appetite.

## For Research Use Only