

Recombinant Human CFHR5 Protein (His Tag)

Catalog Number:PKSH032274



Note: Centrifuge before opening to ensure complete recovery of vial contents.

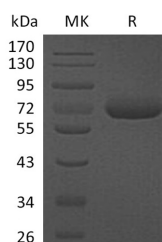
Description

Synonyms	Complement factor H-related protein 5;CFHR5;CFHL5;FHR5
Species	Human
Expression Host	HEK293 Cells
Sequence	Glu19-Glu569
Accession	Q9BXR6
Calculated Molecular Weight	63.5 kDa
Observed molecular weight	61 kDa
Tag	C-His

Properties

Purity	> 95 % as determined by reducing SDS-PAGE.
Endotoxin	< 1.0 EU per µg of the protein as determined by the LAL method.
Storage	Generally, lyophilized proteins are stable for up to 12 months when stored at -20 to -80°C. Reconstituted protein solution can be stored at 4-8°C for 2-7 days. Aliquots of reconstituted samples are stable at < -20°C for 3 months.
Shipping	This product is provided as lyophilized powder which is shipped with ice packs.
Formulation	Lyophilized from a 0.2 µm filtered solution of 20mM PB,150mM NaCl,pH7.4. Normally 5 % - 8 % trehalose, mannitol and 0.01 % Tween80 are added as protectants before lyophilization. Please refer to the specific buffer information in the printed manual
Reconstitution	Please refer to the printed manual for detailed information.

Data



> 95 % as determined by reducing SDS-PAGE.

Background

Complement factor H-related protein 5(FHR-5 for short), is a secreted protein which contains 9 Sushi (CCP/SCR) domains. It is expressed by the liver and secreted in plasma. The pattern of the deposits is similar to other complement components, suggesting that FHR-5 may play a role in complement activation and regulation. Defects in CFHR5 have been found in patients with atypical hemolytic uremic syndrome and may contribute to the disease. In contrast to typical hemolytic uremic syndrome, atypical forms have a poorer prognosis, with higher death rates and frequent progression to end-stage renal disease.

For Research Use Only

A Reliable Research Partner in Life Science and Medicine

Toll-free: 1-888-852-8623

Web: www.elabscience.com

Tel: 1-832-243-6086

Email: techsupport@elabscience.com

Fax: 1-832-243-6017