

LBP Polyclonal Antibody(Capture/Detector)

catalog number: **AN000350P**

Note: Centrifuge before opening to ensure complete recovery of vial contents.

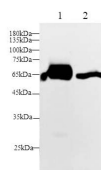
Description

Reactivity	Human;Mouse;Rat
Immunogen	Recombinant Mouse LBP Protein expressed by Mammalian
Host	Rabbit
Isotype	Rabbit IgG
Purification	Antigen Affinity Purification
Buffer	Phosphate buffered solution, pH 7.2, containing 0.05% Proclin300.

Applications Recommended Dilution

WB	1:500-1:1000
IHC	1:500-1:1000
ELISA Capture	2-8 µg/mL
ELISA Detector	0.1-0.4 µg/mL

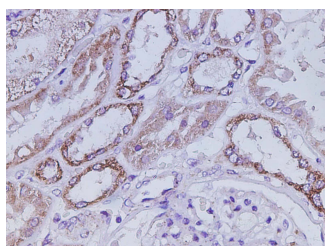
Data



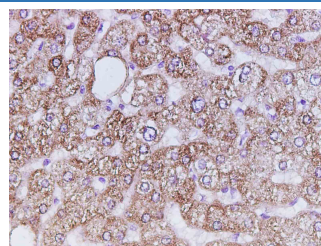
Western Blot with LBP Polyclonal Antibody at dilution of 1:500. Lane 1: Mouse ovary, Lane 2: Rat ovary

Observed-MW: 53 kDa

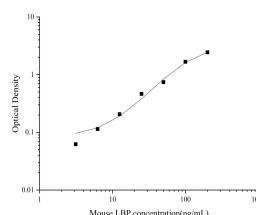
Calculated-MW: 53 kDa



Immunohistochemistry of paraffin-embedded Human kidney using LBP Polyclonal Antibody at dilution of 1:1000



Immunohistochemistry of paraffin-embedded Human liver using LBP Polyclonal Antibody at dilution of 1:1000



Sandwich ELISA-Recombinant Mouse LBP Protein standard curve. Background subtracted standard curve using LBP antibody(AN000350P)(Capture), LBP antibody(AN000350P)(Detector) in sandwich ELISA. The reference range value for Recombinant Mouse LBP Protein is 3.125-200 ng/mL.

Preparation & Storage

Storage	Store at 4°C valid for 12 months or -20°C valid for long term storage, avoid freeze / thaw cycles.
Shipping	The product is shipped with ice pack, upon receipt, store it immediately at the temperature recommended.

For Research Use Only

Background

lipopolysaccharide-binding protein (IBP), a 58kDa glycoprotein synthesized in hepatocytes, belongs to a family of lipid-binding proteins that includes bactericidal/permeability increasing protein (BPI), phospholipid ester transfer protein (PIPTP), and cholesterol ester transfer protein (CETP). IBP binds to the lipid A portion of lipopolysaccharide (LPS) to facilitate the process of LPS monomerization, catalyzes the binding of LPS monomers to CD14, and promotes LPS-induced immune response.