

## IRX2 Polyclonal Antibody

catalog number: E-AB-52041

**Note:** Centrifuge before opening to ensure complete recovery of vial contents.

### Description

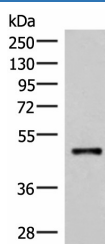
Reactivity	Human;Mouse
Immunogen	Synthetic peptide of human IRX2
Host	Rabbit
Isotype	IgG
Purification	Antigen affinity purification
Conjugation	Unconjugated
Buffer	Phosphate buffered solution, pH 7.4, containing 0.05% stabilizer and 50% glycerol.

### Applications

### Recommended Dilution

WB	1:500-1:2000
IHC	1:30-1:150

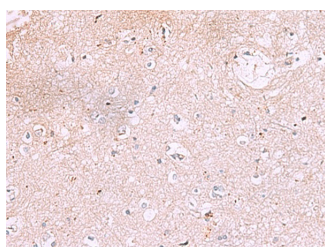
### Data



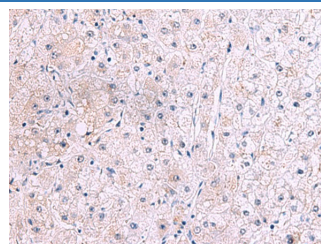
Western blot analysis of Mouse lung tissue lysate using IRX2 Polyclonal Antibody at dilution of 1:300

**Observed-MV:Refer to figures**

**Calculated-MV:49 kDa**



Immunohistochemistry of paraffin-embedded Human brain tissue using IRX2 Polyclonal Antibody at dilution of 1:45(×200)



Immunohistochemistry of paraffin-embedded Human liver cancer tissue using IRX2 Polyclonal Antibody at dilution of 1:45(×200)

### Preparation & Storage

Storage	Store at -20°C Valid for 12 months. Avoid freeze / thaw cycles.
Shipping	The product is shipped with ice pack, upon receipt, store it immediately at the temperature recommended.

### Background

## For Research Use Only

IRX2 is a member of the Iroquois homeobox gene family. Members of this family appear to play multiple roles during pattern formation of vertebrate embryos. IRX2 (Iroquois Homeobox 2) is a Protein Coding gene. Diseases associated with IRX2 include Kidney Clear Cell Sarcoma. GO annotations related to this gene include sequence-specific DNA binding. An important paralog of this gene is IRX5.