

## CHOP Polyclonal Antibody

catalog number: E-AB-70087

**Note:** Centrifuge before opening to ensure complete recovery of vial contents.

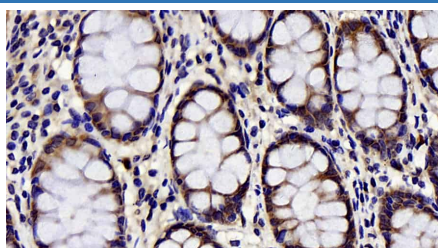
### Description

|                     |   |
|---------------------|---|
| <b>Reactivity</b>   | Human;Mouse;Rat   |
| <b>Immunogen</b>    | KLH conjugated Synthetic peptide corresponding to Mouse CHOP  |
| <b>Host</b>         | Rabbit  |
| <b>Isotype</b>      | IgG   |
| <b>Purification</b> | Affinity purification   |
| <b>Conjugation</b>  | Unconjugated  |
| <b>Buffer</b>       | Phosphate buffered solution, pH 7.4, containing 0.05% stabilizer, 1% protein protectant and 50% glycerol. |

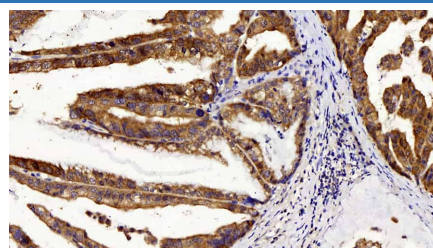
### Applications

**IHC** 1:100-500

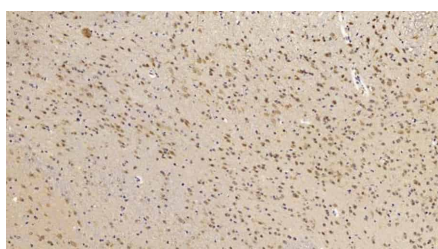
### Data



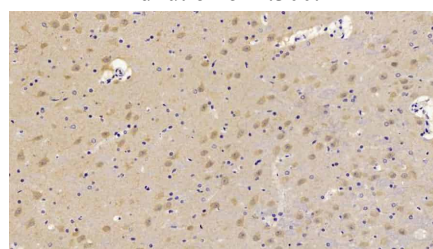
Immunohistochemistry analysis of paraffin-embedded human colon using CHOP Polyclonal Antibody at dilution of 1:300.



Immunohistochemistry analysis of paraffin-embedded human stomach cancer using CHOP Polyclonal Antibody at dilution of 1:300.



Immunohistochemistry analysis of paraffin-embedded mouse brain using CHOP Polyclonal Antibody at dilution of 1:300.



Immunohistochemistry analysis of paraffin-embedded Rat brain using CHOP Polyclonal Antibody at dilution of 1:300.

### Preparation & Storage

|                 |  |
|-----------------|--|
| <b>Storage</b>  | Store at -20°C Valid for 12 months. Avoid freeze / thaw cycles.  |
| <b>Shipping</b> | The product is shipped with ice pack, upon receipt, store it immediately at the temperature recommended. |

### Background

CHOP, also known as GADD153 or DDIT3, is a highly conserved gene in both the structural and regulatory regions to hamster gene. Imposed by unfolded and misfolded proteins, CHOP is significantly induced by ER stress, deficiency of CHOP prevents cell from ER stress. CHOP is considered a proapoptotic marker of ER stress dependent cell death. CHOP acts as a dominant-negative inhibitor of the transcription factor C/EBP and LAP by forming a heterodimer. It may play an important role in the malignant transformation of nevus to melanoma.

### For Research Use Only