

## Elab Fluor® 700 Anti-Human CD62L Antibody[HI62L]

Catalog Number: E-AB-F1336M1

Note: Centrifuge before opening to ensure complete recovery of vial contents.

### Description

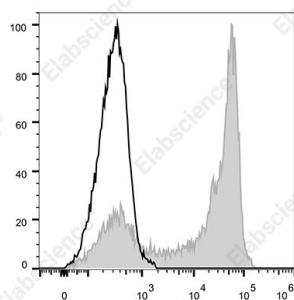
|                         |  |
|-------------------------|--|
| Reactivity              | Human  |
| Host                    | Mouse  |
| Isotype                 | Mouse IgG2a, κ   |
| Clone No.               | HI62L  |
| Isotype Control         | Elab Fluor® 700 Mouse IgG2a, κ Isotype Control[C1.18.4] [Product E-AB-F09802M1]  |
| Conjugation             | Elab Fluor® 700  |
| Conjugation Information | Elab Fluor® 700 is designed to be excited by the Red laser (627-640 nm) and detected using an optical filter centered near 719 nm (e.g., a 725/40 nm bandpass filter). |
| Storage Buffer          | Phosphate buffered solution, pH 7.2, containing 0.09% sodium azide and 1% BSA.   |

### Applications

### Recommended usage

|     |   |
|-----|---|
| FCM | Each lot of this antibody is quality control tested by flow cytometric analysis. <b>The amount of the reagent is suggested to be used 5 μL of antibody per test (million cells in 100 μL staining volume or per 100 μL of whole blood).</b> Please check your vial before the experiment. Since applications vary, the appropriate dilutions must be determined for individual use. |
|-----|---|

### Data



Staining of normal human peripheral blood cells with Elab Fluor® 700 Anti-Human CD62L Antibody[HI62L](filled gray histogram) or Elab Elab Fluor® 700 Mouse IgG2a, κ Isotype Control(empty black histogram). Cells in the lymphocytes gate were used for analysis.

### Preparation & Storage

|          |   |
|----------|---|
| Storage  | Keep as concentrated solution.<br>This product can be stored at 2-8°C for 12 months. Please protected from prolonged exposure to light and do not freeze. |
| Shipping | Ice bag   |

### Antigen Information

|                 |  |
|-----------------|--|
| Alternate Names | CD62L;CD62 antigen-like family member L;L-selectin;LAM-1;LECAM1;Lnhr;Ly-22;Ly22; Lymph node homing receptor;Sell |
| Uniprot ID      | P14151   |

### For Research Use Only

**Gene ID**

6402

**Background**

CD62L is a 74-95 kD single chain type I glycoprotein referred to as L-selectin or LECA M-1. It is expressed on most peripheral blood B cells, subsets of T and NK cells, monocytes, granulocytes, and certain hematopoietic malignant cells. CD62L binds to carbohydrates present on certain glycoforms of CD34, glycam-1, and MAdCAM-1 and with a low affinity to anionic oligosaccharide sequences related to sialylated Lewis X (sLex, CD15s) through its C-type lectin domain. CD62L is important for the homing of naïve lymphocytes to high endothelial venules in peripheral lymph nodes and Peyer's patches. It also plays a role in leukocyte rolling on activated endothelial cells.