

## HSD17B1 Polyclonal Antibody

**catalog number: E-AB-13312**

**Note:** Centrifuge before opening to ensure complete recovery of vial contents.

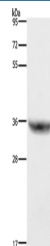
### Description

<b>Reactivity</b>	Human
<b>Immunogen</b>	Synthetic peptide of human HSD17B1
<b>Host</b>	Rabbit
<b>Isotype</b>	IgG
<b>Purification</b>	Affinity purification
<b>Buffer</b>	Phosphate buffered solution, pH 7.4, containing 0.05% stabilizer and 50% glycerol.

### Applications

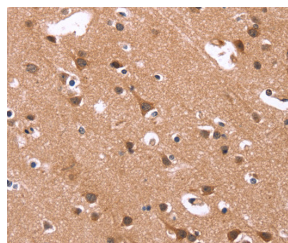
Applications	Recommended Dilution
<b>WB</b>	1:500-1:2000
<b>IHC</b>	1:50-1:200

### Data

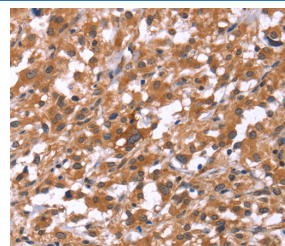


Western Blot analysis of Human placenta tissue using HSD17B1 Polyclonal Antibody at dilution of 1:700

**Calculated-MW:35 kDa**



Immunohistochemistry of paraffin-embedded Human brain using HSD17B1 Polyclonal Antibody at dilution of 1:40



Immunohistochemistry of paraffin-embedded Human thyroid cancer using HSD17B1 Polyclonal Antibody at dilution of 1:40

### Preparation & Storage

<b>Storage</b>	Store at -20°C Valid for 12 months. Avoid freeze / thaw cycles.
<b>Shipping</b>	The product is shipped with ice pack, upon receipt, store it immediately at the temperature recommended.

### Background

### For Research Use Only

Hydroxysteroid (17-beta) dehydrogenase 1 catalyzes the final step in the formation of estradiol and testosterone from estrone and androstenedione, respectively. Ovarian granulosa cells and breast tissue both express HSD17B1. Other tissues that express HSD17B1 include testis, placenta, uterus, prostate and adipose tissue. HSD17B1 functions as a homodimer and prefers NADP(H) over NAD(H) for oxidation and reduction. The gene encoding human HSD17B1 maps to chromosome 17q12-q21. The importance of HSD17B1 to estradiol production suggests the specific inhibition of HSD17B1 may aid in breast cancer therapy.

## For Research Use Only

Toll-free: 1-888-852-8623  
Web: [www.elabscience.com](http://www.elabscience.com)

Tel: 1-832-243-6086  
Email: [techsupport@elabscience.com](mailto:techsupport@elabscience.com)

Fax: 1-832-243-6017

Rev. V1.7