

Recombinant PD L2 Monoclonal Antibody

catalog number: **E-AB-81595**

Note: Centrifuge before opening to ensure complete recovery of vial contents.

Description

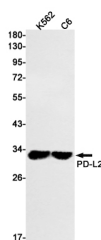
Reactivity	Human;Rat
Immunogen	A synthetic peptide of human PD-L2
Host	Rabbit
Isotype	IgG
Clone	R02-2A1
Purification	Affinity Purified
Buffer	50mM Tris-Glycine(pH 7.4), 0.15M NaCl, 40% Glycerol, 0.05% stabilizer and 0.05% protective protein.

Applications

Recommended Dilution

WB	1:500-1:1000
-----------	--------------

Data



Western blot detection of PD-L2 in K562,C6 cell lysates using PD-L2 Rabbit mAb(1:1000 diluted).Predicted band size:31kDa.Observed band size:31kDa.

Observed-MW:31 kDa

Calculated-MW:31 kDa

Preparation & Storage

Storage	Store at -20°C Valid for 12 months . Avoid freeze / thaw cycles.
Shipping	The product is shipped with ice pack,upon receipt,store it immediately at the temperature recommended.

Background

Programmed cell death 1 ligand 2 (also known as PD-L2, B7-DC) is a protein that in humans is encoded by the PDCD1LG2 gene. PDCD1LG2 has also been designated as CD273 (cluster of differentiation 273). Involved in the costimulatory signal, essential for T-cell proliferation and IFNG production in a PDCD1-independent manner. Interaction with PDCD1 inhibits T-cell proliferation by blocking cell cycle progression and cytokine production.

For Research Use Only