

Recombinant Human Ephrin-B1/EFNB1 Protein (His Tag)



Catalog Number: PKSH032394

Note: Centrifuge before opening to ensure complete recovery of vial contents.

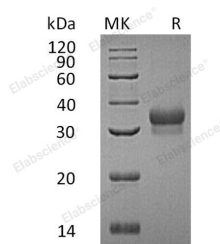
Description

Synonyms	Ephrin-B1;EFL-3;ELK ligand;EPH-related receptor tyrosine kinase ligand 2;LERK-2;CFND;CFNS;EFB1;EFL3;Elk-L;EPLG2;LERK2
Species	Human
Expression Host	HEK293 Cells
Sequence	Leu28-Gly232
Accession	P98172
Calculated Molecular Weight	23.4 kDa
Observed molecular weight	28-34 kDa
Tag	C-His

Properties

Purity	> 95 % as determined by reducing SDS-PAGE.
Endotoxin	< 1.0 EU per µg of the protein as determined by the LAL method.
Storage	Generally, lyophilized proteins are stable for up to 12 months when stored at -20 to -80°C. Reconstituted protein solution can be stored at 4-8°C for 2-7 days. Aliquots of reconstituted samples are stable at < -20°C for 3 months.
Shipping	This product is provided as lyophilized powder which is shipped with ice packs.
Formulation	Lyophilized from a 0.2 µm filtered solution of 20mM PB, 150mM NaCl, pH7.4. Normally 5 % - 8 % trehalose, mannitol and 0.01% Tween80 are added as protectants before lyophilization. Please refer to the specific buffer information in the printed manual
Reconstitution	Please refer to the printed manual for detailed information.

Data



> 95 % as determined by reducing SDS-PAGE.

Background

Ephrin-B1, also named EFL-3, ELK ligand, EPH-related receptor tyrosine kinase ligand 2, is a single-pass type I membrane protein. It contains 1 ephrin RBD (ephrin receptor-binding) domain and belongs to the ephrin family. Ephrins are divided into the ephrin-A (EFNA) class, which are anchored to the membrane by a glycosylphosphatidylinositol linkage, and the ephrin-B (EFNB) class, which are transmembrane proteins. All ephrins share a conserved extracellular sequence, which most likely corresponds to the receptor-binding domain. Ephrin-B1 has been shown to bind EphA3, EphB1, EphB2, EphB3, and EphB4. The extracellular domains of human and mouse ephrin-B1 share 94% amino acid identity.

For Research Use Only

A Reliable Research Partner in Life Science and Medicine

Toll-free: 1-888-852-8623

Web: www.elabscience.com

Tel: 1-832-243-6086

Email: techsupport@elabscience.com

Fax: 1-832-243-6017