

## Elab Fluor® Violet 500 Anti-Mouse CD25 Antibody[PC-61.5.3]

Catalog Number: E-AB-F1102R

Note: Centrifuge before opening to ensure complete recovery of vial contents.

### Description

Reactivity	Mouse
Host	Rat
Isotype	Rat IgG1, κ
Clone No.	PC-61.5.3
Isotype Control	Elab Fluor® Violet 500 Rat IgG1, κ Isotype Control[HRPN] [Product E-AB-F09822R]
Conjugation	Elab Fluor® Violet 500
Conjugation Information	Elab Fluor® Violet 500 is designed to be excited by the violet laser (405 nm) and detected using an optical filter centered near 501 nm (e.g., a 525/45 nm bandpass filter).
Storage Buffer	Phosphate buffered solution, pH 7.2, containing 0.09% sodium azide and 1% BSA.

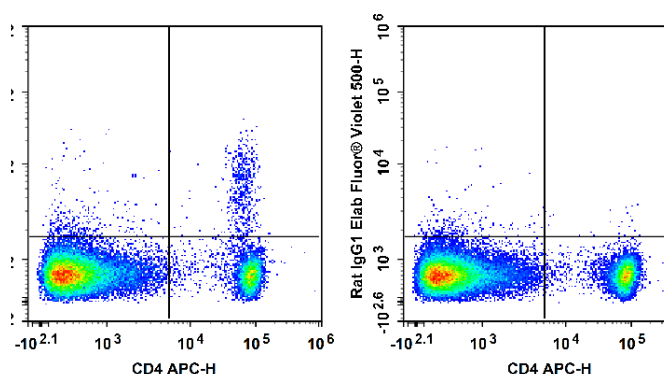
### Applications

### Recommended usage

#### FCM

Each lot of this antibody is quality control tested by flow cytometric analysis. **The amount of the reagent is suggested to be used 5 μL of antibody per test (million cells in 100 μL staining volume or per 100 μL of whole blood).** Please check your vial before the experiment. Since applications vary, the appropriate dilutions must be determined for individual use.

### Data



Staining of C57BL/6 murine splenocytes with APC Anti-

Mouse CD4 Antibody[GK1.5] and Elab Fluor® Violet 500 Anti-Mouse CD25 Antibody[PC-61.5.3] (left) or Elab Fluor® Violet 500 Rat IgG1, κ Isotype Control (right). Total viable cells were used for analysis.

### Preparation & Storage

#### Storage

Keep as concentrated solution.

This product can be stored at 2-8°C for 12 months. Please protected from prolonged exposure to light and do not freeze.

#### Shipping

Ice bag

### Antigen Information

#### Alternate Names

IL-2 receptor subunit alpha;IL-2-RA;IL-2R subunit alpha;IL2-RA;IL2RA;Interleukin-2 receptor subunit alpha;TAC antigen;p55

#### Uniprot ID

P01590

### For Research Use Only

**Gene ID**

16184

**Background**

CD25 is a 55 kD glycoprotein, also known as the low affinity IL-2R $\alpha$ , Ly-43, p55, or Tac. It is expressed on activated T and B cells, thymocyte subset, pre-B cells, and T regulatory cells. In association with CD122 (IL-2R $\beta$ ) and CD132 (common  $\gamma$  chain), CD25 forms the high affinity signaling IL-2 receptor.