

## Elab Fluor® Violet 610 Anti-Mouse CD25 Antibody[PC-61.5.3]

Catalog Number: E-AB-F1102T

Note: Centrifuge before opening to ensure complete recovery of vial contents.

### Description

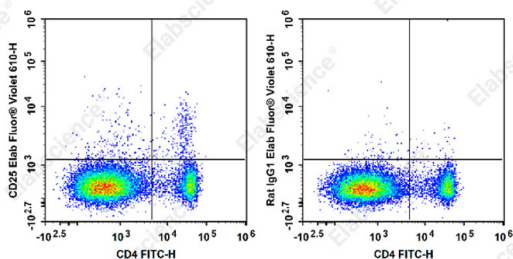
<b>Reactivity</b>	Mouse
<b>Host</b>	Rat
<b>Isotype</b>	Rat IgG1, κ
<b>Clone No.</b>	PC-61.5.3
<b>Isotype Control</b>	Elab Fluor® Violet 610 Rat IgG1, κ Isotype Control[HRPN] [Product E-AB-F09822T]
<b>Conjugation</b>	Elab Fluor® Violet 610
<b>Conjugation Information</b>	Elab Fluor® Violet 610 is designed to be excited by the violet laser (405 nm) and detected using an optical filter centered near 613 nm (e.g., a 615/20 nm bandpass filter).
<b>Storage Buffer</b>	Phosphate buffered solution, pH 7.2, containing 0.09% stabilizer.

### Applications

### Recommended usage

<b>FCM</b>	Each lot of this antibody is quality control tested by flow cytometric analysis. <b>The amount of the reagent is suggested to be used 5 μL of antibody per test (million cells in 100 μL staining volume or per 100 μL of whole blood).</b> Please check your vial before the experiment. Since applications vary, the appropriate dilutions must be determined for individual use.
------------	---

### Data



Staining of C57BL/6 murine splenocytes with FITC Anti-Mouse CD4 Antibody[GK1.5] and Elab Fluor® Violet 610 Anti-Mouse CD25 Antibody[PC-61.5.3] (left) or Elab Fluor® Violet 610 Rat IgG1, κ Isotype Control (right). Total viable cells were used for analysis.

### Preparation & Storage

<b>Storage</b>	Keep as concentrated solution. This product can be stored at 2-8°C for 12 months. Please protected from prolonged exposure to light and do not freeze.
<b>Shipping</b>	Ice bag

### Antigen Information

<b>Alternate Names</b>	IL-2 receptor subunit alpha;IL-2-RA;IL-2R subunit alpha;IL2-RA;IL2RA;Interleukin-2 receptor subunit alpha;TAC antigen;p55
<b>Uniprot ID</b>	P01590

### For Research Use Only

**Gene ID**

16184

**Background**

CD25 is a 55 kD glycoprotein, also known as the low affinity IL-2R $\alpha$ , Ly-43, p55, or Tac. It is expressed on activated T and B cells, thymocyte subset, pre-B cells, and T regulatory cells. In association with CD122 (IL-2R $\beta$ ) and CD132 (common  $\gamma$  chain), CD25 forms the high affinity signaling IL-2 receptor.