

Elab Fluor® Violet 500 Anti-Mouse Ly6G Antibody[1A8]

Catalog Number: E-AB-F1108R

Note: Centrifuge before opening to ensure complete recovery of vial contents.

Description

| | |
|-------------------------|--|
| Reactivity | Mouse |
| Host | Rat |
| Isotype | Rat IgG2a, κ |
| Clone No. | 1A8 |
| Isotype Control | Elab Fluor® Violet 500 Rat IgG2a, κ Isotype Control[2A3] [Product E-AB-F09832R] |
| Conjugation | Elab Fluor® Violet 500 |
| Conjugation Information | Elab Fluor® Violet 500 is designed to be excited by the violet laser (405 nm) and detected using an optical filter centered near 501 nm (e.g., a 525/45 nm bandpass filter). |
| Storage Buffer | Phosphate buffered solution, pH 7.2, containing 0.09% sodium azide and 1% BSA. |

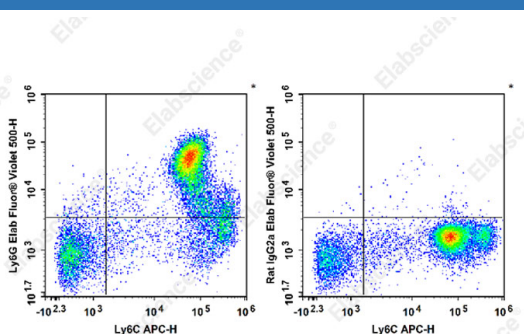
Applications

Recommended usage

FCM

Each lot of this antibody is quality control tested by flow cytometric analysis. **The amount of the reagent is suggested to be used 5 μL of antibody per test (million cells in 100 μL staining volume or per 100 μL of whole blood).** Please check your vial before the experiment. Since applications vary, the appropriate dilutions must be determined for individual use.

Data



Staining of C57BL/6 murine bone marrow cells with APC

Anti-Mouse Ly6C Antibody[Monts 1] and Elab Fluor® Violet 500 Anti-Mouse Ly6G Antibody[1A8] (left) or Elab Fluor® Violet 500 Rat IgG2a, κ Isotype Control (right). Total viable cells were used for analysis.

Preparation & Storage

| | |
|----------|---|
| Storage | Keep as concentrated solution. This product can be stored at 2-8°C for 12 months. Please protected from prolonged exposure to light and do not freeze. |
| Shipping | Ice bag |

Antigen Information

| | |
|-----------------|--|
| Alternate Names | Ly-6G;Ly-6G.1;Ly6g;Lymphocyte antigen 6G |
| Uniprot ID | P35461 |
| Gene ID | 546644 |

For Research Use Only

Background

Lymphocyte antigen 6 complex, locus G (Ly-6G), a 21-25 kD GPI-anchored protein, is expressed on the majority of myeloid cells in bone marrow and peripheral granulocytes