

Recombinant LAMP1/CD107a Monoclonal Antibody

catalog number: **AN300057P**

Note: Centrifuge before opening to ensure complete recovery of vial contents.

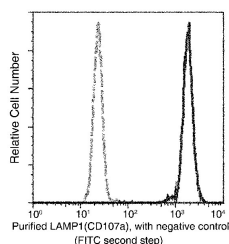
Description

Reactivity	Human
Immunogen	Recombinant Human LAMP1 protein
Host	Rabbit
Isotype	IgG
Clone	A1167
Purification	Protein A
Buffer	0.2 µm filtered solution in PBS

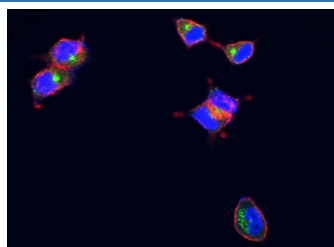
Applications

Applications	Recommended Dilution
IHC-P	1:100-1:500
ICC/IF	1:20-1:100
FCM	1:20-1:100
IP	0.2-1 µL/mg of lysate

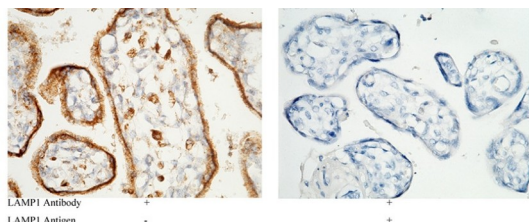
Data



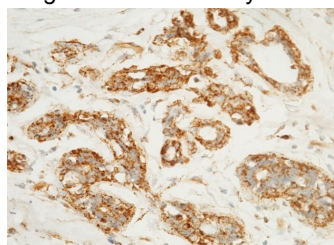
Flow cytometric analysis of Human LAMP1(CD107a) on Jurkat cells. Cells were stained with purified anti-Human LAMP1(CD107a), then a FITC-conjugated second step antibody. The histogram were derived from gated events with the forward and side light-scatter characteristics of intact cells.



Immunofluorescence analysis of Human LAMP1 in MCF7 cells. Cells were fixed with 4% PFA, permeabilized with 1% Triton X-100 in PBS, blocked with 10% serum, and incubated with Rabbit anti-Human LAMP1 Monoclonal Antibody (1:300). Then cells were stained with the Alexa Fluor® 488-conjugated Goat Anti-rabbit IgG secondary antibody, countstained with Alexa Fluor® 546-conjugated phallotoxins (red) and DAPI for nuclear staining (blue). Positive staining was localized to lysosome membrane.



Immunohistochemistry of paraffin-embedded human placenta using LAMP1 / CD107a Monoclonal Antibody at dilution of 1:1000.



Immunohistochemistry of paraffin-embedded human breast carcinoma using LAMP1 / CD107a Monoclonal Antibody at dilution of 1:1000.

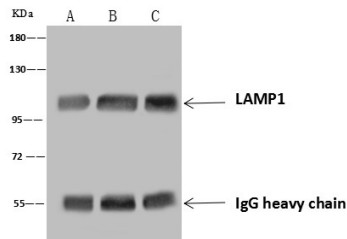
For Research Use Only

Toll-free: 1-888-852-8623
Web: www.elabscience.com

Tel: 1-832-243-6086
Email: techsupport@elabscience.com

Fax: 1-832-243-6017

Rev. V1.2



Immunoprecipitation analysis using 4 μ L anti-LAMP1 Monoclonal Antibody and 60 μ g of Immunomagnetic beads

Protein A/G. Western blot was performed from the immunoprecipitate using LAMP1 Monoclonal Antibody at a dilution of 1:100. Lane A:0.5 mg Jurkat Whole Cell Lysate,

Lane B:0.5 mg HeLa Whole Cell Lysate, Lane C:0.5 mg

Daudi Whole Cell Lysate

Preparation & Storage

Storage

This antibody can be stored at 2°C-8°C for one month without detectable loss of activity. Antibody products are stable for twelve months from date of receipt when stored at -20°C to -80°C. Preservative-Free. Avoid repeated freeze-thaw cycles.

Shipping

Ice bag

Background

The protein encoded by this gene is a member of a family of membrane glycoproteins. This glycoprotein provides selectins with carbohydrate ligands. It may also play a role in tumor cell metastasis.