

RALGPS1 Polyclonal Antibody

catalog number: **E-AB-90965**

Note: Centrifuge before opening to ensure complete recovery of vial contents.

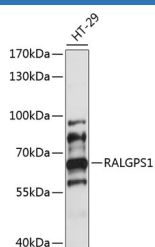
Description

| | |
|---------------------|--|
| Reactivity | Human |
| Immunogen | Recombinant fusion protein of human RALGPS1 |
| Host | Rabbit |
| Isotype | IgG |
| Purification | Affinity purification |
| Buffer | Phosphate buffered solution, pH 7.4, containing 0.05% stabilizer and 50% glycerol. |

Applications Recommended Dilution

| | |
|-----------|--------------|
| WB | 1:500-1:2000 |
|-----------|--------------|

Data



Western blot analysis of extracts of HT-29 cells using RALGPS1 Polyclonal Antibody at 1:1000 dilution.

Observed-MV:62 kDa

Calculated-MV:11 kDa/24 kDa/34 kDa/43 kDa/58 kDa/59 kDa/62 kDa

Preparation & Storage

| | |
|-----------------|--|
| Storage | Store at -20°C Valid for 12 months. Avoid freeze / thaw cycles. |
| Shipping | The product is shipped with ice pack, upon receipt, store it immediately at the temperature recommended. |

Background

Guanine nucleotide exchange factor (GEF for the small GTPase RALA. May be involved in cytoskeletal organization (By similarity. Guanine nucleotide exchange factor for.

For Research Use Only