

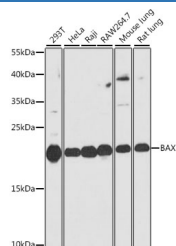
## (KO Validated) BAX Polyclonal Antibody

catalog number: E-AB-63606

**Note:** Centrifuge before opening to ensure complete recovery of vial contents.

Description	
Reactivity	Human;Mouse;Rat
Immunogen	A synthetic peptide of human BAX (NP_620116.1).
Host	Rabbit
Isotype	IgG
Purification	Affinity purification
Conjugation	Unconjugated
Buffer	Phosphate buffered solution, pH 7.4, containing 0.05% stabilizer and 50% glycerol.
Applications	Recommended Dilution
WB	1:500-1:2000
IHC	1:100-1:200

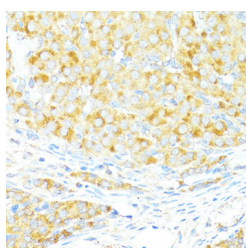
## Data



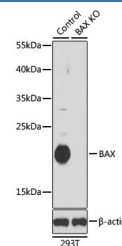
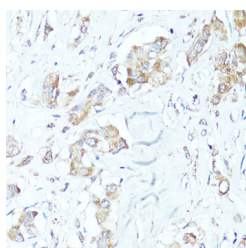
Western blot analysis of extracts of various cell lines using BAX Polyclonal Antibody at dilution of 1:1000.

**Observed-MW:20 kDa**

**Calculated-MW:4 kDa/12 kDa/15 kDa/18 kDa/19 kDa/21 kDa/24 kDa**



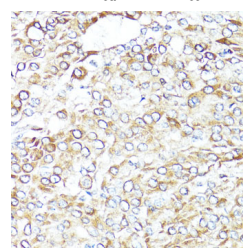
Immunohistochemistry of paraffin-embedded Rat ovary using BAX Polyclonal Antibody at dilution of 1:100 (40x lens).



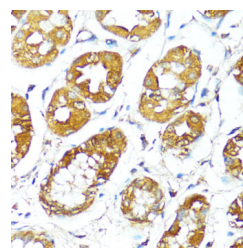
Western blot analysis of extracts from normal (control) and BAX knockout (KO) 293T cells using BAX Polyclonal Antibody at dilution of 1:1000.

**Observed-MW:20 kDa**

**Calculated-MW:4 kDa/12 kDa/15 kDa/18 kDa/19 kDa/21 kDa/24 kDa**



Immunohistochemistry of paraffin-embedded Human lung cancer using BAX Polyclonal Antibody at dilution of 1:100 (40x lens).



## For Research Use Only

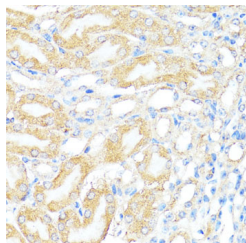
Tel: 400-999-2100

Web: [www.elabscience.cn](http://www.elabscience.cn)

Email: [techsupport@elabscience.cn](mailto:techsupport@elabscience.cn)

Rev. V1.9

Immunohistochemistry of paraffin-embedded Human breast cancer using BAX Polyclonal Antibody at dilution of 1:100 (40x lens).



Immunohistochemistry of paraffin-embedded Human stomach using BAX Polyclonal Antibody at dilution of 1:100 (40x lens).

Immunohistochemistry of paraffin-embedded Mouse kidney using BAX Polyclonal Antibody at dilution of 1:100 (40x lens).

## Preparation & Storage

### Storage

Store at -20°C Valid for 12 months. Avoid freeze / thaw cycles.

### Shipping

The product is shipped with ice pack, upon receipt, store it immediately at the temperature recommended.

## Background

The protein encoded by this gene belongs to the BCL2 protein family. BCL2 family members form hetero- or homodimers and act as anti- or pro-apoptotic regulators that are involved in a wide variety of cellular activities. This protein forms a heterodimer with BCL2, and functions as an apoptotic activator. This protein is reported to interact with, and increase the opening of, the mitochondrial voltage-dependent anion channel (VDAC), which leads to the loss in membrane potential and the release of cytochrome c. The expression of this gene is regulated by the tumor suppressor P53 and has been shown to be involved in P53-mediated apoptosis. Multiple alternatively spliced transcript variants, which encode different isoforms, have been reported for this gene.