

Recombinant TOMM20 Monoclonal Antibody

catalog number: E-AB-81488

Note: Centrifuge before opening to ensure complete recovery of vial contents.

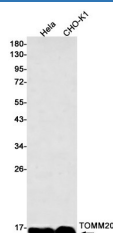
Description

| | |
|---------------------|---|
| Reactivity | Human;Hamster |
| Immunogen | Recombinant protein of human TOMM20 |
| Host | Rabbit |
| Isotype | IgG |
| Clone | R03-7F6 |
| Purification | Affinity Purified |
| Buffer | 50mM Tris-Glycine(pH 7.4), 0.15M NaCl, 40% Glycerol, 0.05% stabilizer and 0.05% protective protein. |

Applications

| Applications | Recommended Dilution |
|--------------|----------------------|
| WB | 1:1000-1:2000 |
| IHC | 1:50-1:100 |
| IF | 1:50-1:100 |

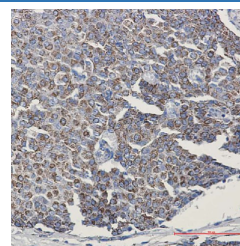
Data



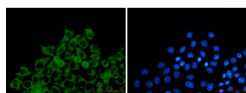
Western blot detection of TOMM20 in HeLa,CHO-K1 cell lysates using TOMM20 Rabbit mAb(1:500 diluted).Predicted band size:16kDa.Observed band size:16kDa.

Observed-MW:16 kDa

Calculated-MW:16 kDa



Immunohistochemistry of TOMM20 in paraffin-embedded Human breast cancer tissue using TOMM20 Rabbit mAb at dilution 1:50



Immunofluorescence of TOMM2 (green) in HeLa using TOMM2 Rabbit mAb at dilution 1:50, and DAPI(blue)

Preparation & Storage

| | |
|-----------------|--|
| Storage | Store at -20°C Valid for 12 months. Avoid freeze / thaw cycles. |
| Shipping | The product is shipped with ice pack,upon receipt,store it immediately at the temperature recommended. |

Background

For Research Use Only

Toll-free: 1-888-852-8623
Web:www.elabscience.com

Tel: 1-832-243-6086
Email:techsupport@elabscience.com

Fax: 1-832-243-6017

Rev. V1.7

TOMM20 (Translocase Of Outer Mitochondrial Membrane 20) is a Protein Coding gene. Diseases associated with TOMM20 include Perry Syndrome and Infantile Neuroaxonal Dystrophy 1. Among its related pathways are Deubiquitination and Neuroscience. GO annotations related to this gene include unfolded protein binding and P-P-bond-hydrolysis-driven protein transmembrane transporter activity. An important paralog of this gene is TOMM20L.

For Research Use Only

Toll-free: 1-888-852-8623
Web: www.elabscience.com

Tel: 1-832-243-6086
Email: techsupport@elabscience.com

Fax: 1-832-243-6017

Rev. V1.7