

## Lbp Polyclonal Antibody

catalog number: **D-AB-10177L**

**Note:** Centrifuge before opening to ensure complete recovery of vial contents.

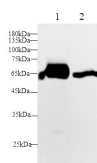
### Description

<b>Reactivity</b>	Mouse;Rat
<b>Immunogen</b>	Recombinant Mouse Lbp protein expressed by Mammalian
<b>Host</b>	Rabbit
<b>Isotype</b>	Rabbit IgG
<b>Purification</b>	Antigen Affinity Purification
<b>Buffer</b>	PBS with 0.05% Proclin300, 1% protective protein and 50% glycerol, pH7.4

### Applications

<b>WB</b>	1:500-1:1000
-----------	--------------

### Data



Western blot with Lbp Polyclonal antibody at dilution of 1:500.lane 1:Mouse ovary,lane 2:Rat ovary

**Observed-MW:67 kDa**

**Calculated-MW:53 kDa**

### Preparation & Storage

<b>Storage</b>	Store at -20°C Valid for 12 months. Avoid freeze / thaw cycles.
<b>Shipping</b>	The product is shipped with ice pack, upon receipt, store it immediately at the temperature recommended.

### Background

lipopolysaccharide-binding protein (IBP),a 58kDa glycoprotein synthesized in hepatocytes,belongs to a family of lipid-binding proteins that includes bactericidal/permeability increasing protein (BPI),phospholipid ester transfer protein ( PLTP),and cholesterol ester transfer protein (CETP). IBP binds to the lipidA portion of lipopolysaccharide (IPS) to facilitate the process of IPS monomerization,catalyzes the binding of IPS monomers to CD14,and promotes IPS-induced immune response.

### For Research Use Only

Toll-free: 1-888-852-8623  
Web:[www.elabscience.com](http://www.elabscience.com)

Tel: 1-832-243-6086  
Email:[techsupport@elabscience.com](mailto:techsupport@elabscience.com)

Fax: 1-832-243-6017

Rev. V2.3