

# Recombinant Human PSPH Protein (His Tag)

Catalog Number: PKSH032897

**Note:** Centrifuge before opening to ensure complete recovery of vial contents.

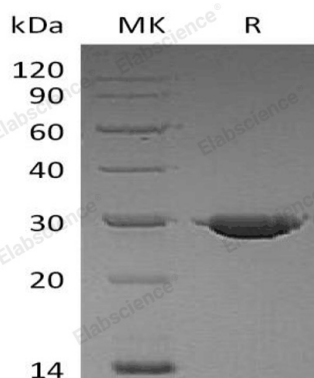
## Description

<b>Species</b>	Human
<b>Mol_Mass</b>	26.1 kDa
<b>Accession</b>	P78330
<b>Bio-activity</b>	Not validated for activity

## Properties

<b>Purity</b>	> 95 % as determined by reducing SDS-PAGE.
<b>Endotoxin</b>	< 1.0 EU per µg of the protein as determined by the LAL method.
<b>Storage</b>	Store at < -20°C, stable for 6 months. Please minimize freeze-thaw cycles.
<b>Shipping</b>	This product is provided as liquid. It is shipped at frozen temperature with blue ice/gel packs. Upon receipt, store it immediately at < -20°C.
<b>Formulation</b>	Supplied as a 0.2 µm filtered solution of 20mM Tris-HCl, 4M Urea, 5mM EDTA, pH 8.0.
<b>Reconstitution</b>	Not Applicable

## Data



> 95 % as determined by reducing SDS-PAGE.

## Background

Phosphoserine phosphatase (PSP) is an enzyme that belongs to the serB family. PSPH catalyzes magnesium-dependent hydrolysis of L-phosphoserine and is also involved in an exchange reaction between L-serine and L-phosphoserine. The reaction mechanism proceeds via the formation of a phosphoryl-enzyme intermediates. Deficiency of this protein is thought to be linked to Williams syndrome. A disorder that results in pre- and postnatal growth retardation; moderate psychomotor retardation and facial features suggestive of Williams syndrome.

## For Research Use Only