

## YIPF7 Polyclonal Antibody

catalog number: **E-AB-91462**

**Note:** Centrifuge before opening to ensure complete recovery of vial contents.

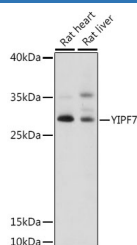
### Description

<b>Reactivity</b>	Rat
<b>Immunogen</b>	Recombinant fusion protein of human YIPF7
<b>Host</b>	Rabbit
<b>Isotype</b>	IgG
<b>Purification</b>	Affinity purification
<b>Buffer</b>	Phosphate buffered solution, pH 7.4, containing 0.05% stabilizer and 50% glycerol.

### Applications

<b>WB</b>	1:500-1:2000
-----------	--------------

### Data



Western blot analysis of extracts of various cell lines using YIPF7 Polyclonal Antibody at 1:1000 dilution.

**Observed-MV:31 kDa**

**Calculated-MV:7 kDa/14 kDa/23 kDa/30 kDa**

### Preparation & Storage

<b>Storage</b>	Store at -20°C Valid for 12 months. Avoid freeze / thaw cycles.
<b>Shipping</b>	The product is shipped with ice pack, upon receipt, store it immediately at the temperature recommended.

### Background

Predicted to be involved in endoplasmic reticulum to Golgi vesicle-mediated transport and vesicle fusion with Golgi apparatus. Predicted to be located in endoplasmic reticulum membrane. Predicted to be integral component of membrane. Predicted to be active in trans-Golgi network.

### For Research Use Only