

HPS4 Polyclonal Antibody

catalog number: **E-AB-66705**

Note: Centrifuge before opening to ensure complete recovery of vial contents.

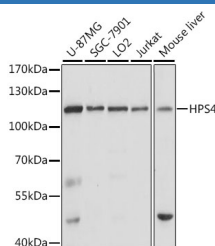
Description

Reactivity	Human;Mouse;Rat
Immunogen	A synthetic peptide of human HPS4 (NP_690054.1).
Host	Rabbit
Isotype	IgG
Purification	Affinity purification
Buffer	Phosphate buffered solution, pH 7.4, containing 0.05% stabilizer and 50% glycerol.

Applications

Applications	Recommended Dilution
WB	1:500-1:2000
IF	1:50-1:200

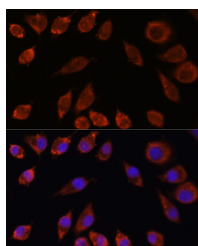
Data



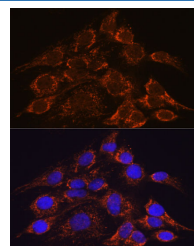
Western blot analysis of extracts of various cell lines using HPS4 Polyclonal Antibody at dilution of 1:1000.

Observed-MW:115 kDa

Calculated-MW:58 kDa/76 kDa/78 kDa



Immunofluorescence analysis of L929 cells using HPS4 Polyclonal Antibody at dilution of 1:100. Blue: DAPI for nuclear staining.



Immunofluorescence analysis of C6 cells using HPS4 Polyclonal Antibody at dilution of 1:100. Blue: DAPI for nuclear staining.

Preparation & Storage

Storage	Store at -20°C Valid for 12 months. Avoid freeze / thaw cycles.
Shipping	The product is shipped with ice pack, upon receipt, store it immediately at the temperature recommended.

Background

For Research Use Only

This gene encodes a protein component of biogenesis of lysosome-related organelles complexes (BLOC). BLOC complexes are important for the formation of endosomal-lysosomal organelles such as melanosomes and platelet dense granules. Mutations in this gene result in subtype 4 of Hermansky-Pudlak syndrome, a form of albinism. Alternative splicing results in multiple transcript variants.

For Research Use Only

Toll-free: 1-888-852-8623
Web: www.elabscience.com

Tel: 1-832-243-6086
Email: techsupport@elabscience.com

Fax: 1-832-243-6017

Rev. V1.7