

## Recombinant Human PDIA6 Protein (His Tag)

**Catalog Number:** PKSH032958

**Note:** Centrifuge before opening to ensure complete recovery of vial contents.

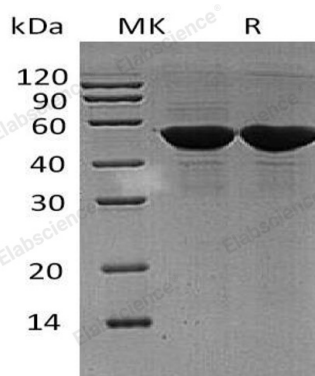
### Description

<b>Species</b>	Human
<b>Source</b>	HEK293 Cells-derived Human PDIA6 protein Leu20-Leu440, with an C-terminal His
<b>Calculated MW</b>	47.2 kDa
<b>Observed MW</b>	52 kDa
<b>Accession</b>	Q15084
<b>Bio-activity</b>	Not validated for activity

### Properties

<b>Purity</b>	> 95 % as determined by reducing SDS-PAGE.
<b>Concentration</b>	Subject to label value.
<b>Endotoxin</b>	< 1.0 EU per µg of the protein as determined by the LAL method.
<b>Storage</b>	Store at < -20°C, stable for 6 months. Please minimize freeze-thaw cycles.
<b>Shipping</b>	This product is provided as liquid. It is shipped at frozen temperature with blue ice/gel packs. Upon receipt, store it immediately at < -20°C.
<b>Formulation</b>	Supplied as a 0.2 µm filtered solution of 20mM Tris-HCl, 150mM NaCl, 10% Glycerol, pH 8.0.

### Data



> 95 % as determined by reducing SDS-PAGE.

### Background

Protein Disulfide-Isomerase A6 (PDIA6) is a 48.5kDa protein that belongs to the protein disulfide isomerase family (PDI). PDIA6 is an enzyme in the endoplasmic reticulum in eukaryotes which catalyzes the formation and breakage of disulfide bonds between cysteine residues within proteins as they fold. The PDIA6 expressed in platelets, its functions as a chaperone that inhibits aggregation of misfolded proteins. PDIA6 is part a large chaperone multiprotein complex comprising DNAJB11, HSP90B1, HSPA5, HYOU, PDIA2, PDIA4, PDIA6, PPIB, SDF2L1, UGT1A1. PDIA6 also plays a role in platelet aggregation and activation by agonists such as convulxin, collagen and thrombin.