

## PE Anti-Human CD147 Antibody[HIM6]

Catalog Number: E-AB-F1056D

**Note:** Centrifuge before opening to ensure complete recovery of vial contents.

### Description

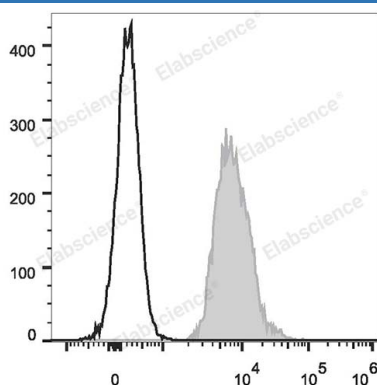
<b>Reactivity</b>	Human
<b>Host</b>	Mouse
<b>Isotype</b>	Mouse IgG1, κ
<b>Clone No.</b>	HIM6
<b>Isotype Control</b>	PE Mouse IgG1, κ Isotype Control[MOPC-21] [Product E-AB-F09792D]
<b>Conjugation</b>	PE
<b>Conjugation Information</b>	PE is designed to be excited by the Blue (488 nm), Green (532 nm) and Yellow-Green (561 nm) lasers and detected using an optical filter centered near 575 nm (e.g., a 585/42 nm bandpass filter).
<b>Storage Buffer</b>	Phosphate buffered solution, pH 7.2, containing 0.09% stabilizer.

### Applications

### Recommended usage

<b>FCM</b>	Each lot of this antibody is quality control tested by flow cytometric analysis. <b>The amount of the reagent is suggested to be used 5 μL of antibody per test (million cells in 100 μL staining volume or per 100 μL of whole blood).</b> Please check your vial before the experiment. Since applications vary, the appropriate dilutions must be determined for individual use.
------------	---

### Data



Human peripheral blood lymphocytes are stained with PE Anti-Human CD147 Antibody (filled gray histogram). Unstained lymphocytes (empty black histogram) are used as control.

### Preparation & Storage

<b>Storage</b>	Keep as concentrated solution. This product can be stored at 2-8°C for 24 months. Please protected from prolonged exposure to light and do not freeze.
<b>Shipping</b>	Ice bag

### Antigen Information

<b>Alternate Names</b>	5F7;BSG;Basigin;CD147;Collagenase stimulatory factor;EMMPRIN;Extracellular matrix metalloproteinase inducer;Leukocyte activation antigen M6;OK blood group antigen; TCSF;Tumor cell-derived collagenase stimulatory factor
------------------------	--

### For Research Use Only

<b>Uniprot ID</b>	P35613
<b>Gene ID</b>	682
<b>Background</b>	CD147, also known as neurothelin or basigin, is a member of the Ig superfamily. It is a 55-65 kD type I transmembrane glycoprotein which is primarily expressed on leukocytes, erythrocytes, platelets, and endothelial cells. CD147 is reported to have a function during embryonal brain development and/or play a role in integrin-mediated adhesion in brain endothelia.