

Recombinant Mouse Tissue Factor/CD142 Protein (His Tag)

Catalog Number: PKSM040693

Note: *Centrifuge before opening to ensure complete recovery of vial contents.*

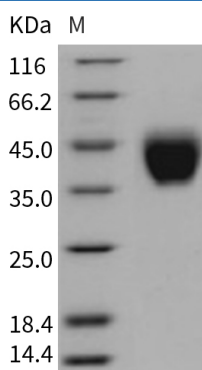
Description

Species	Mouse
Source	HEK293 Cells-derived Mouse Tissue Factor/CD142 protein Met 1-Glu 251, with an C-terminal His
Calculated MW	26.8 kDa
Observed MW	40-45 kDa
Accession	NP_034301.3
Bio-activity	Measured by its ability to activate Coagulation Factor VII in cleaving a fluorogenic peptide substrate Boc-VPR-AMC (R&D Systems, Catalog# ES011). The AC50 is < 5 µg/ml.

Properties

Purity	> 98 % as determined by reducing SDS-PAGE.
Endotoxin	< 1.0 EU per µg of the protein as determined by the LAL method.
Storage	Generally, lyophilized proteins are stable for up to 12 months when stored at -20 to -80°C. Reconstituted protein solution can be stored at 4-8°C for 2-7 days. Aliquots of reconstituted samples are stable at < -20°C for 3 months.
Shipping	This product is provided as lyophilized powder which is shipped with ice packs.
Formulation	Lyophilized from sterile PBS, pH 7.4 Normally 5% - 8% trehalose, mannitol and 0.01% Tween 80 are added as protectants before lyophilization. Please refer to the specific buffer information in the printed manual.
Reconstitution	Please refer to the printed manual for detailed information.

Data



> 98 % as determined by reducing SDS-PAGE.

Background

For Research Use Only

Toll-free: 1-888-852-8623
Web: www.elabscience.com

Tel: 1-832-243-6086
Email: techsupport@elabscience.com

Fax: 1-832-243-6017

Tissue factor (TF), also known as coagulation factor III, F3, and CD142, is a single-pass type I membrane protein which belongs to the tissue factor family. Tissue factor is one of the proteins that participate in hemostatic and inflammatory processes. Activated monocytes present in the liver increase expression of tissue factor, and while accumulating in the organ they can intensify inflammation. Tissue factor is the protein that activates the blood clotting system by binding to, and activating, the plasma serine protease, factor VIIa, following vascular injury. Tissue factor is not only the main physiological initiator of normal blood coagulation, but is also important in the natural history of solid malignancies in that it potentiates metastasis and angiogenesis and mediates outside-in signalling. Tissue factor is expressed constitutively by many tissues which are not in contact with blood and by other cells upon injury or activation; the latter include endothelial cells, tissue macrophages, and peripheral blood monocytes. Coagulation Factor III is a transmembrane glycoprotein that localizes the coagulation serine protease factor VII/VIIa (FVII/VIIa) to the cell surface. The primary function of TF is to activate the clotting cascade. The TF:FVIIa complex also activates cells by cleavage of a G-protein coupled receptor called protease-activated receptor 2 (PAR2). TF is expressed by tumor cells and contributes to a variety of pathologic processes, such as thrombosis, metastasis, tumor growth, and tumor angiogenesis.

For Research Use Only

Toll-free: 1-888-852-8623
Web: www.elabscience.com

Tel: 1-832-243-6086
Email: techsupport@elabscience.com

Fax: 1-832-243-6017