

## Recombinant PKC beta 2 Monoclonal Antibody

catalog number: **E-AB-81518**

**Note:** Centrifuge before opening to ensure complete recovery of vial contents.

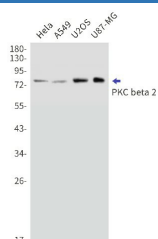
### Description

<b>Reactivity</b>	Human;Rat
<b>Immunogen</b>	A synthesized peptide derived from human PKC beta 2
<b>Host</b>	Rabbit
<b>Isotype</b>	IgG
<b>Clone</b>	R06-0C2
<b>Purification</b>	Affinity Purified
<b>Buffer</b>	50mM Tris-Glycine(pH 7.4), 0.15M NaCl, 40% Glycerol, 0.05% stabilizer and 0.05% protective protein.

### Applications

Applications	Recommended Dilution
<b>WB</b>	1:500-1:1000
<b>IHC</b>	1:50-1:100

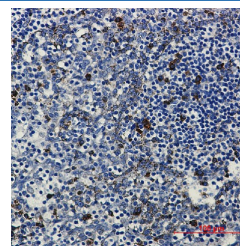
### Data



Western blot detection of PKC beta 2 in Hela,A549,U2OS,U87-MG cell lysates using PKC beta 2 Rabbit mAb(1:1000 diluted).Observed band size:77kDa.

**Observed-MW:77 kDa**

**Calculated-MW:77 kDa**



Immunohistochemical of PKC beta 2 in Human tonsil tissue using PKC beta 2 antibody at dilution 1:50

### Preparation & Storage

<b>Storage</b>	Store at -20°C Valid for 12 months. Avoid freeze / thaw cycles.
<b>Shipping</b>	The product is shipped with ice pack,upon receipt,store it immediately at the temperature recommended.

### Background

Protein kinase C (PKC) is a family of serine- and threonine-specific protein kinases that can be activated by calcium and second messenger diacylglycerol. PKC family members phosphorylate a wide variety of protein targets and are known to be involved in diverse cellular signaling pathways. PKC family members also serve as major receptors for phorbol ester s, a class of tumor promoters. Each member of the PKC family has a specific expression profile and is believed to play a distinct role in cells. The protein encoded by this gene is one of the PKC family members. This protein kinase has been reported to be involved in many different cellular functions, such as B cell activation, apoptosis induction, endothelial cell proliferation, and intestinal sugar absorption.

### For Research Use Only