

PE Anti-Mouse MHC II (I-A/I-E) Antibody[M5/114]

Catalog Number: E-AB-F0990D

Note: Centrifuge before opening to ensure complete recovery of vial contents.

Description

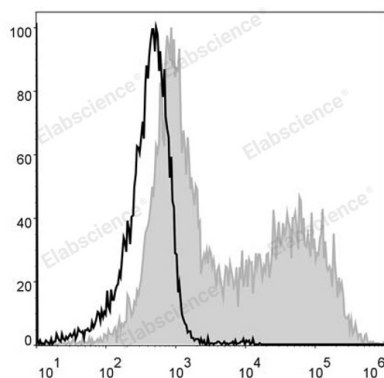
Reactivity	Mouse
Host	Rat
Isotype	Rat IgG2b, κ
Clone No.	M5/114
Isotype Control	PE Rat IgG2b, κ Isotype Control[LTF-2] [Product E-AB-F09842D]
Conjugation	PE
Conjugation Information	PE is designed to be excited by the Blue (488 nm), Green (532 nm) and Yellow-Green (561 nm) lasers and detected using an optical filter centered near 575 nm (e.g., a 585/42 nm bandpass filter).
Storage Buffer	Phosphate buffered solution, pH 7.2, containing 0.09% stabilizer and 1% protein protectant.

Applications

Recommended usage

FCM	Each lot of this antibody is quality control tested by flow cytometric analysis. The amount of the reagent is suggested to be used 5 μL of antibody per test (million cells in 100 μL staining volume or per 100 μL of whole blood). Please check your vial before the experiment. Since applications vary, the appropriate dilutions must be determined for individual use.
------------	--

Data



C57BL/6 murine splenocytes are stained with PE Anti-Mouse MHC II (I-A/I-E) Antibody (filled gray histogram). Unstained splenocytes (empty black histogram) are used as control.

Preparation & Storage

Storage	Keep as concentrated solution. This product can be stored at 2-8°C for 12 months. Please protected from prolonged exposure to light and do not freeze.
Shipping	Ice bag

Antigen Information

Alternate Names	H2-Ab1/Eb1;I-E beta MHC class II;MHC class II;MHC class II H2-IA-beta-psi;Major histocompatibility protein class II beta chain
Uniprot ID	P14483;O78196

For Research Use Only

Gene ID

14961,14969

Background

These class II molecules are expressed on antigen presenting cells (including B cells) and a subset of T cells from H-2b,d,q,r bearing mice and are involved in antigen presentation to T cells expressing CD3/TCR and CD4 proteins.

For Research Use Only

Toll-free: 1-888-852-8623
Web: www.elabscience.com

Tel: 1-832-243-6086
Email: techsupport@elabscience.com

Fax: 1-832-243-6017

Rev. V1.5