

Recombinant Human LILRA5 Protein (His Tag)

Catalog Number: PDMH100368



Note: Centrifuge before opening to ensure complete recovery of vial contents.

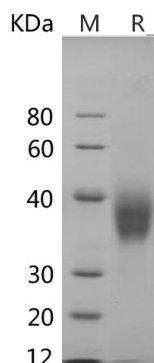
Description

Species	Human
Mol_Mass	26.1 kDa
Accession	A6NI73
Bio-activity	Not validated for activity

Properties

Purity	> 95% as determined by reducing SDS-PAGE.
Endotoxin	< 1.0 EU/mg of the protein as determined by the LAL method
Storage	Generally, lyophilized proteins are stable for up to 12 months when stored at -20 to -80 °C. Reconstituted protein solution can be stored at 4-8°C for 2-7 days. Aliquots of reconstituted samples are stable at < -20°C for 3 months.
Shipping	This product is provided as lyophilized powder which is shipped with ice packs.
Formulation	Lyophilized from a 0.2 µm filtered solution in PBS with 5% Trehalose and 5% Mannitol.
Reconstitution	It is recommended that sterile water be added to the vial to prepare a stock solution of 0.5 mg/mL. Concentration is measured by UV-Vis.

Data



> 95 % as determined by reducing SDS-PAGE.

Background

Leukocyte Immunoglobulin-like Receptor Subfamily A Member 5 (LILRA5) is a member of the leukocyte immunoglobulin-like receptors (LILR), comprise a family of activating and inhibitory type immunoreceptors. LILRA5 consists of a 227 amino acid (aa) extracellular domain (ECD), a 21 aa transmembrane segment, and a 10 aa cytoplasmic tail. The ECD contains two Ig-like domains and the transmembrane segment contains a positively charged aspartic acid residue which may mediate its association with the signaling molecule, FcR common gamma chain. LILRA5 is expressed by monocytes, macrophages, and neutrophils. Cross-linking of LILRA5 on monocytes induces the expression of pro-inflammatory cytokines (IL-1beta, IL-6, TNF-alpha) as well as the anti-inflammatory IL-10. It can be detected in tissues of the hematopoietic system, including bone marrow, spleen, lymph node and peripheral leukocytes. Crosslink of ILT-11 on the surface of monocytes has been shown to induce calcium flux and secretion of several proinflammatory cytokines, which suggests the roles of this protein in triggering innate immune responses.

For Research Use Only

A Reliable Research Partner in Life Science and Medicine
Tel:400-999-2100

Email:techsupport@elabscience.cn

Web:www.elabscience.cn

Rev. V1.2