

# Recombinant Human CDK2 Protein (E.coli, His Tag)

Catalog Number: PDEH100671



**Note:** Centrifuge before opening to ensure complete recovery of vial contents.

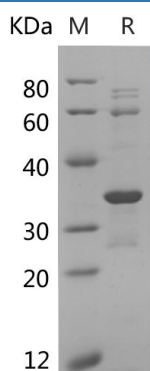
## Description

<b>Species</b>	Human
<b>Mol_Mass</b>	36.1 kDa
<b>Accession</b>	P24941
<b>Bio-activity</b>	Not validated for activity

## Properties

<b>Purity</b>	> 90% as determined by reducing SDS-PAGE.
<b>Endotoxin</b>	< 10 EU/mg of the protein as determined by the LAL method
<b>Storage</b>	Generally, lyophilized proteins are stable for up to 12 months when stored at -20 to -80 °C. Reconstituted protein solution can be stored at 4-8°C for 2-7 days. Aliquots of reconstituted samples are stable at < -20°C for 3 months.
<b>Shipping</b>	This product is provided as lyophilized powder which is shipped with ice packs.
<b>Formulation</b>	Lyophilized from a 0.2 µm filtered solution in PBS with 5% Trehalose and 5% Mannitol.
<b>Reconstitution</b>	It is recommended that sterile water be added to the vial to prepare a stock solution of 0.5 mg/mL. Concentration is measured by UV-Vis.

## Data



> 90 % as determined by reducing SDS-PAGE.

## Background

Cyclin-dependent kinase 2 (CDK2) belongs to the cyclin-dependent kinase of Ser/Thr protein kinase. CDK2 acts as a catalytic subunit of the cyclin dependent kinase complex, whose activity is restricted to the G1-S phase of the cell cycle, it is essential for the G1/S transition. The kinase activity of CDK2 can be regulated by the association with a cyclin subunit, its phosphorylation state and CDK inhibitors. The activation of the CDK2/cyclin complex requires the phosphorylation of Thr160 and the dephosphorylation of Try14 and Tyr15. The inhibition of CDK2-cyclin complex can also be attributed to association with p27Kip1 and p21Waf1/Cip1. The activation of CDK2 has been shown to be necessary for apoptosis of quiescent cells, such as neurons, thymocytes and endothelial cells.

## For Research Use Only

A Reliable Research Partner in Life Science and Medicine  
Tel:400-999-2100

Email:[techsupport@elabscience.cn](mailto:techsupport@elabscience.cn)

Web:[www.elabscience.cn](http://www.elabscience.cn)

Rev. V1.2