

Recombinant Human Carboxypeptidase B1/CPB1 Protein (His Tag)

Catalog Number: PKSH032171

Note: Centrifuge before opening to ensure complete recovery of vial contents.

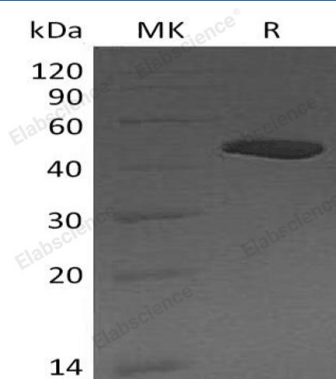
Description

Species	Human
Source	HEK293 Cells-derived Human Carboxypeptidase B1;CPB1 protein His 16-Tyr417, with an C-terminal His
Calculated MW	46.9 kDa
Observed MW	47 kDa
Accession	P15086
Bio-activity	Not validated for activity

Properties

Purity	> 95 % as determined by reducing SDS-PAGE.
Concentration	Subject to label value.
Endotoxin	< 1.0 EU per µg of the protein as determined by the LAL method.
Storage	Store at < -20°C, stable for 6 months. Please minimize freeze-thaw cycles.
Shipping	This product is provided as liquid. It is shipped at frozen temperature with blue ice/gel packs. Upon receipt, store it immediately at < - 20°C.
Formulation	Supplied as a 0.2 µm filtered solution of 20mM MES, 150mM NaCl, pH 5.5.

Data



> 95 % as determined by reducing SDS-PAGE.

Background

Carboxypeptidase B1 is an exopeptidase which specifically cleaves the C-terminal Arg and Lys residues with a preference for Arg. Expressed mainly in pancreas, CPB1 is a useful serum marker for acute pancreatitis and pancreatic graft rejection. Human CPB1 consists of a signal peptide, a pro region, and a mature chain. The purified rhCPB1 corresponds to the pro form, which can be activated by trypsin, the only pancreatic protease capable of generating active enzyme from the zymogen in vitro.

For Research Use Only