

COX2 Polyclonal Antibody

catalog number: E-AB-70030

Note: Centrifuge before opening to ensure complete recovery of vial contents.

Description

Reactivity	Mouse;Rat
Immunogen	KLH conjugated Synthetic peptide corresponding to Mouse COX2
Host	Rabbit
Isotype	IgG
Purification	Affinity purification
Buffer	Phosphate buffered solution, pH 7.4, containing 0.05% stabilizer, 1% protein protectant and 50% glycerol.

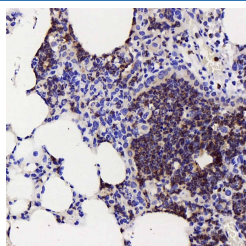
Applications

IHC

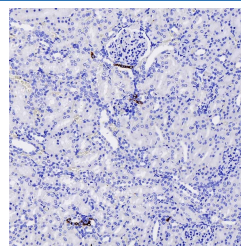
Recommended Dilution

1:200-1:800

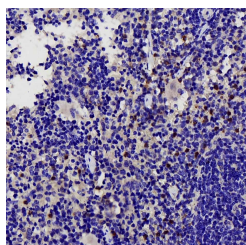
Data



Immunohistochemistry analysis of paraffin-embedded mouse pneumonia using COX2 Polyclonal Antibody at dilution of 1:500.



Immunohistochemistry analysis of paraffin-embedded Rat nephritis using COX2 Polyclonal Antibody at dilution of 1:500.



Immunohistochemistry analysis of paraffin-embedded Mouse spleen using COX2 Polyclonal Antibody at dilution of 1:500.

Preparation & Storage

Storage	Store at -20°C Valid for 12 months. Avoid freeze / thaw cycles.
Shipping	The product is shipped with ice pack, upon receipt, store it immediately at the temperature recommended.

Background

Prostaglandin-endoperoxide synthase (PTGS), also known as cyclooxygenase, is the key enzyme in prostaglandin biosynthesis, and acts both as a dioxygenase and as a peroxidase. There are two isozymes of PTGS: a constitutive PTGS1 and an inducible PTGS2, which differ in their regulation of expression and tissue distribution. This gene encodes the inducible isozyme.

For Research Use Only