

## Elab Fluor® 488 Anti-Mouse CD18 Antibody[M18/2]

Catalog Number: E-AB-F1113L

**Note:** Centrifuge before opening to ensure complete recovery of vial contents.

### Description

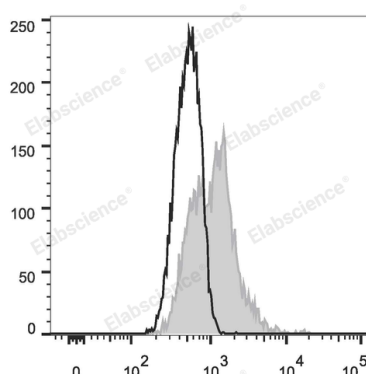
<b>Reactivity</b>	Mouse
<b>Host</b>	Rat
<b>Isotype</b>	Rat IgG2a, κ
<b>Clone No.</b>	M18/2
<b>Isotype Control</b>	Elab Fluor® 488 Rat IgG2a, κ Isotype Control[2A3] [Product E-AB-F09832L]
<b>Conjugation</b>	Elab Fluor® 488
<b>Conjugation Information</b>	Elab Fluor® 488 is designed to be excited by the Blue laser (488 nm) and detected using an optical filter centered near 520 nm (e.g., a 525/40 nm bandpass filter).
<b>Storage Buffer</b>	Phosphate buffered solution, pH 7.2, containing 0.09% sodium azide and 1% BSA.

### Applications

### Recommended usage

**FCM** Each lot of this antibody is quality control tested by flow cytometric analysis. **The amount of the reagent is suggested to be used 5 μL of antibody per test (million cells in 100 μL staining volume or per 100 μL of whole blood).** Please check your vial before the experiment. Since applications vary, the appropriate dilutions must be determined for individual use.

### Data



C57BL/6 murine splenocytes are stained with Elab Fluor® 488 Anti-Mouse CD18 Antibody (filled gray histogram).

Unstained splenocytes (empty black histogram) are used as control.

### Preparation & Storage

<b>Storage</b>	Keep as concentrated solution. This product can be stored at 2-8°C for 12 months. Please protected from prolonged exposure to light and do not freeze.
<b>Shipping</b>	Ice bag

### Antigen Information

<b>Alternate Names</b>	CD18;Cell surface adhesion glycoproteins LFA-1/CR3/p150+95 subunit beta; Complement receptor C3 subunit beta;Integrin beta-2;Itgb2
<b>Uniprot ID</b>	P11835
<b>Gene ID</b>	16414

### For Research Use Only

## Background

CD18 is a 95 kD protein, also known as integrin  $\beta$ 2 subunit. It is expressed on all leukocytes. CD18, in association with integrin  $\alpha$  chain CD11a, CD11b, and CD11c forms LFA-1, Mac-1, and  $\alpha$ X $\beta$ 2, respectively, and plays an important role in leukocytes adhesion. The CD18 integrin complexes bind ICAM-1 (CD54), ICAM-2 (CD102), ICAM-3 (CD50), iC3b, and fibrinogen.