

Recombinant Cynomolgus CSF1R/CD115 Protein (His Tag)

Catalog Number: PKSQ050034



Note: Centrifuge before opening to ensure complete recovery of vial contents.

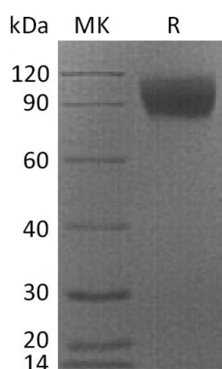
Description

Species	Cynomolgus macaques
Mol_Mass	56.1 kDa
Accession	XP_005558297.1
Bio-activity	Not validated for activity

Properties

Purity	> 95 % as determined by reducing SDS-PAGE.
Endotoxin	< 1.0 EU per µg of the protein as determined by the LAL method.
Storage	Generally, lyophilized proteins are stable for up to 12 months when stored at -20 to -80 °C. Reconstituted protein solution can be stored at 4-8°C for 2-7 days. Aliquots of reconstituted samples are stable at < -20°C for 3 months.
Shipping	This product is provided as lyophilized powder which is shipped with ice packs.
Formulation	Lyophilized from a 0.2 µm filtered solution of PBS, pH 7.4. Normally 5% - 8% trehalose, mannitol and 0.01% Tween 80 are added as protectants before lyophilization. Please refer to the specific buffer information in the printed manual.
Reconstitution	Please refer to the printed manual for detailed information.

Data



> 95 % as determined by reducing SDS-PAGE.

Background

Macrophage colony-stimulating factor 1 receptor (CSF1R) is a member of the type III subfamily of receptor tyrosine kinases that also includes receptors for SCF and PDGF. These receptors each contain five immunoglobulin-like domains in their extracellular domain (ECD) and a split kinase domain in their intracellular region. CSF1R is expressed primarily on cells of the monocyte/macrophage lineage, dendritic cells, stem cells and in the developing placenta. CSF1 and its receptor (CSF1R, product of *c-fms* proto-oncogene) were initially implicated as essential for normal monocyte development as well as for trophoblastic implantation. It plays an important role in the regulation of osteoclast proliferation and differentiation, the regulation of bone resorption, and is required for normal bone and tooth development. It is required for normal male and female fertility, and for normal development of milk ducts and acinar structures in the mammary gland during pregnancy. Aberrant expression of CSF1 or CSF1R may play a role in inflammatory diseases, such as rheumatoid arthritis, glomerulonephritis, atherosclerosis, and allograft rejection.

For Research Use Only

A Reliable Research Partner in Life Science and Medicine
Tel:400-999-2100

Email:techsupport@elabscience.cn

Web:www.elabscience.cn

Rev. V3.2