

# Purified Anti-Human CD7 Antibody[HIT7]

catalog number: E-AB-F1315A

**Note:** Centrifuge before opening to ensure complete recovery of vial contents.

## Description

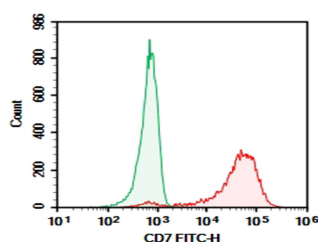
<b>Reactivity</b>	Human
<b>Host</b>	Mouse
<b>Isotype</b>	Mouse IgG1, $\kappa$
<b>Clone</b>	HIT7
<b>Conjugation</b>	Unconjugated
<b>buffer</b>	PBS, pH 7.2. Contains 0.05% proclin 300.

## Applications

## Recommended Dilution

<b>FCM</b>	2 $\mu\text{g}/\text{mL}$ ( $1 \times 10^5$ - $5 \times 10^5$ cells)
------------	--

## Data



Human peripheral blood lymphocytes were stained with 0.2  $\mu\text{g}$  Purified Anti-Human CD7 Antibody[HIT7] (Right) and 0.2  $\mu\text{g}$  Rabbit IgG1,  $\kappa$  Isotype Control (Left), followed by Alexa Fluor<sup>®</sup> 647-conjugated Goat Anti-Rabbit IgG Secondary Antibody.

## Preparation & Storage

<b>Storage</b>	Store at 4°C valid for 12 months or -20°C valid for long term storage, avoid freeze / thaw cycles.
<b>Shipping</b>	Ice bag

## Background

CD7 is a 40 kD type I transmembrane glycoprotein also known as gp40. It is a member of the immunoglobulin superfamily found on T cells, NK cells, thymocytes, hematopoietic progenitors, and monocytes (weakly). CD7 is also expressed on acute lymphocytic leukemia (ALL) and some acute myeloid leukemia (AML) cells. CD7 crosslinking induces a calcium flux in T lymphocytes, presumably as a result of cytoplasmic domain association with PI3-kinase. CD7 costimulation can induce cytokine secretion and modulate cellular adhesion.

## For Research Use Only