

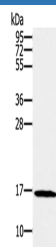
SNCG Polyclonal Antibody

catalog number: E-AB-10081

Note: Centrifuge before opening to ensure complete recovery of vial contents.

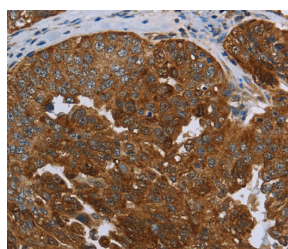
Description	
Reactivity	Human
Immunogen	Recombinant protein of human SNCG
Host	Rabbit
Isotype	IgG
Purification	Affinity purification
Conjugation	Unconjugated
Buffer	Phosphate buffered solution, pH 7.4, containing 0.05% stabilizer and 50% glycerol.
Applications	Recommended Dilution
WB	1:500-1:2000
IHC	1:100-1:300

Data

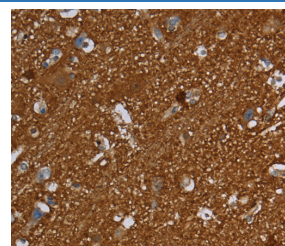


Western Blot analysis of HT-29 cell using SNCG Polyclonal Antibody at dilution of 1:800

Calculated-MW:13 kDa



Immunohistochemistry of paraffin-embedded Human ovarian cancer using SNCG Polyclonal Antibody at dilution of 1:60



Immunohistochemistry of paraffin-embedded Human brain using SNCG Polyclonal Antibody at dilution of 1:60

Preparation & Storage	
Storage	Store at -20°C Valid for 12 months. Avoid freeze / thaw cycles.
Shipping	The product is shipped with ice pack, upon receipt, store it immediately at the temperature recommended.

Background

This gene encodes a member of the synuclein family of proteins which are believed to be involved in the pathogenesis of neurodegenerative diseases. Mutations in this gene have also been associated with breast tumor development.

For Research Use Only