

# ADAMTS15 Polyclonal Antibody

Catalog Number:E-AB-10171



**Note:** Centrifuge before opening to ensure complete recovery of vial contents.

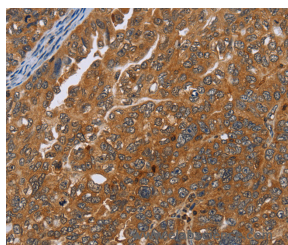
## Description

<b>Reactivity</b>	Human,Mouse
<b>Immunogen</b>	Recombinant protein of human ADAMTS15
<b>Host</b>	Rabbit
<b>Isotype</b>	IgG
<b>Purification</b>	Affinity purification
<b>Conjugation</b>	Unconjugated
<b>Formulation</b>	PBS with 0.05% sodium azide and 50% glycerol, PH7.4

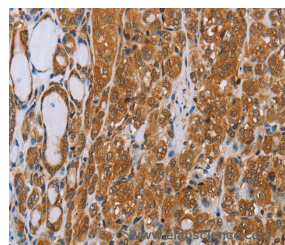
## Applications Recommended Dilution

<b>IHC</b>	1:50-1:200
------------	------------

## Data



Immunohistochemistry of paraffin-embedded Human ovarian cancer tissue using ADAMTS15 Polyclonal Antibody at dilution 1:40



Immunohistochemistry of paraffin-embedded Human thyroid cancer tissue using ADAMTS15 Polyclonal Antibody at dilution 1:40

## Preparation & Storage

<b>Storage</b>	Store at -20°C. Avoid freeze / thaw cycles.
----------------	---

## Background

This gene encodes a member of the ADAMTS (a disintegrin and metalloproteinase with thrombospondin motifs) protein family. ADAMTS family members share several distinct protein modules, including a propeptide region, a metalloproteinase domain, a disintegrin-like domain, and a thrombospondin type 1 (TS) motif. Individual members of this family differ in the number of C-terminal TS motifs, and some have unique C-terminal domains. The protein encoded by this gene has a high sequence similarity to the proteins encoded by ADAMTS1 and ADAMTS8.

## For Research Use Only

A Reliable Research Partner in Life Science and Medicine

Toll-free: 1-888-852-8623

Web: [www.elabscience.com](http://www.elabscience.com)

Tel: 1-832-243-6086

Email: [techsupport@elabscience.com](mailto:techsupport@elabscience.com)

Fax: 1-832-243-6017