

Elab Fluor® 647-conjugated beta actin Monoclonal Antibody

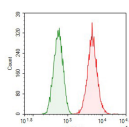
catalog number: AN00295M

Note: Centrifuge before opening to ensure complete recovery of vial contents.

Description	
Reactivity	Rat
Immunogen	Recombinant human Beta actin protein by E. Coli
Host	Mouse
Isotype	IgG1
Clone	3A9
Purification	Protein A/G Purification
Conjugation	Elab Fluor® 647(Ex/Em:650nm/665nm)
Buffer	PBS with 0.05% proclin 300, 1% protective protein and 50% glycerol,pH7.4

Applications	Recommended Dilution
FCM	0.2 µg per 10 ⁶ cells in a 100 µL suspension

Data



1X10⁶ C6 cells were intracellularly stained with 0.2 ug Elab Fluor® 647-conjugated beta actin Monoclonal Antibody (red), or 0.2 ug Elab Fluor® 647-conjugated beta actin Monoclonal Antibody Isotype Control (green).

Preparation & Storage	
Storage	Store at -20°C Valid for 12 months. A void freeze / thaw cycles. Protected from prolonged exposure to light.
Shipping	The product is shipped with ice pack,upon receipt,store it immediately at the temperature recommended.

Background
Beta-actin (ACTB/ACTB) is one of six different actin isoforms in humans. Actins are highly conserved proteins that are involved in cell motility,structure and integrity. Beta actin is a major constituent of the contractile apparatus and one of the two nonmuscle cytoskeletal actins. Beta-actin gene is stably and constitutively expressed at high levels in most tissues and cells,and commonly used as a loading control for western blot and as a control for qPCR.