

Elab Fluor® 700 Anti-Human CD329 Antibody[K8]

Catalog Number: AN00319M1

Note: Centrifuge before opening to ensure complete recovery of vial contents.

Description

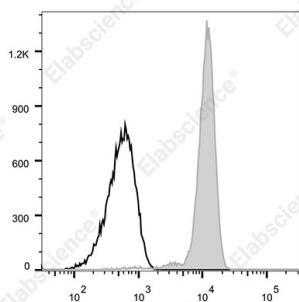
Reactivity	Human
Host	Mouse
Isotype	Mouse IgG1, κ
Clone No.	K8
Isotype Control	Elab Fluor® 700 Mouse IgG1, κ Isotype Control[MOPC-21] [Product E-AB-F09792M1]
Conjugation	Elab Fluor® 700
Conjugation Information	Elab Fluor® 700 is designed to be excited by the Red laser (627-640 nm) and detected using an optical filter centered near 719 nm (e.g., a 725/40 nm bandpass filter).
Storage Buffer	Phosphate buffered solution, pH 7.2, containing 0.09% stabilizer and 1% protein protectant.

Applications

Recommended usage

FCM	Each lot of this antibody is quality control tested by flow cytometric analysis. The amount of the reagent is suggested to be used 5 µL of antibody per test (million cells in 100 µL staining volume or per 100 µL of whole blood). Please check your vial before the experiment. Since applications vary, the appropriate dilutions must be determined for individual use.
------------	---

Data



Staining of normal human peripheral blood cells with Elab

Fluor® 700 Anti-Human CD329 Antibody[K8](filled gray histogram) or Elab Fluor® 700 Mouse IgG1, κ Isotype Control(empty black histogram). Cells in the granulocytes gate were used for analysis.

Preparation & Storage

Storage	Keep as concentrated solution. This product can be stored at 2-8°C for 12 months. Please protected from prolonged exposure to light and do not freeze.
Shipping	Ice bag

Antigen Information

Alternate Names	Siglec-9;Sialic acid-binding Ig-like lectin-9
Uniprot ID	Q9Y336

For Research Use Only

Toll-free: 1-888-852-8623
Web: www.elabscience.com

Tel: 1-832-243-6086
Email: techsupport@elabscience.com

Fax: 1-832-243-6017

Rev. V1.6

Gene ID

27180

Background

Siglecs are cell surface receptors belonging to the immunoglobulin superfamily that recognize sugar antigens. The extracellular domain of siglec-9 contains an IgV region, which binds sialic acid, followed by two IgC regions. Siglec 9 and siglec 6-8,10-12 are CD33 (siglec 3) like siglecs, which have two ITIMs in the cytoplasmic tails, suggesting their functional involvement in signal transduction. It is highly expressed on neutrophils and monocytes, and at lower levels on the subpopulations of T and B lymphocytes and NK cells. Siglec-9 plays a role in negative regulation of T cell activation, and it also affects neutrophil apoptosis.