

## Recombinant Human UBA5 Protein (His Tag)

**Catalog Number:** PKSH033194

**Note:** Centrifuge before opening to ensure complete recovery of vial contents.

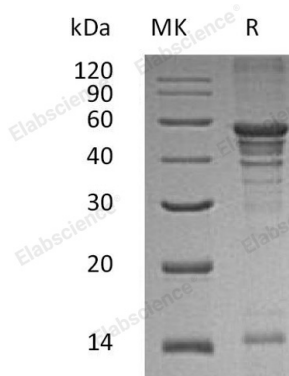
### Description

<b>Species</b>	Human
<b>Source</b>	E.coli-derived Human UBA5 protein Met 1-Met404, with an N-terminal His
<b>Calculated MW</b>	47.0 kDa
<b>Observed MW</b>	14&40-60 kDa
<b>Accession</b>	Q9GZZ9
<b>Bio-activity</b>	Not validated for activity

### Properties

<b>Purity</b>	> 90 % as determined by reducing SDS-PAGE.
<b>Concentration</b>	Subject to label value.
<b>Endotoxin</b>	< 1.0 EU per µg of the protein as determined by the LAL method.
<b>Storage</b>	Store at < -20°C, stable for 6 months. Please minimize freeze-thaw cycles.
<b>Shipping</b>	This product is provided as liquid. It is shipped at frozen temperature with blue ice/gel packs. Upon receipt, store it immediately at < - 20°C.
<b>Formulation</b>	Supplied as a 0.2 µm filtered solution of 20mM Tris-HCl, 50mM NaCl, 1mM DTT, 10% Glycerol, pH8.0.

### Data



> 90 % as determined by reducing SDS-PAGE.

### Background

UBA5 is a member of the ubiquitin-activating E1 family and UBA5 subfamily. Ubiquitin and ubiquitin-like proteins are recognized as covalently conjugated to various cellular substrates by a three-step enzymatic pathway. The ubiquitin-activating enzyme (E1) has a vital role in the first step of ubiquitination pathway to activate ubiquitin or ubiquitin-like proteins. UBA5 activates ubiquitin-fold modifier 1, a ubiquitin-like post-translational modifier protein, via the formation of a high-energy thioester bond. UBA5 is located primarily in cytoplasm, while it generally localizes to the nucleus in presence of SUMO2.